

INSIG2 Antibody

Catalog No: #36556

Orders: order@signalwayantibody.comSupport: tech@signalwayantibody.com

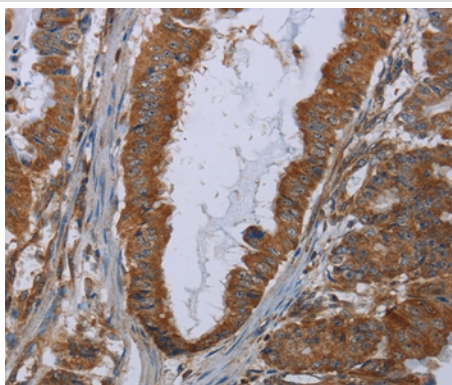
Description

Product Name	INSIG2 Antibody
Host Species	Rabbit
Clonality	Polyclonal
Purification	Antigen affinity purification.
Applications	IHC
Species Reactivity	Hu
Specificity	The antibody detects endogenous levels of total INSIG2 protein.
Immunogen Type	Recombinant Protein
Immunogen Description	Fusion protein corresponding to a region derived from internal residues of human insulin induced gene 2
Target Name	INSIG2
Other Names	INSI2;INSIG2 membrane protein; insulin induced protein 2
Accession No.	Swiss-Prot#: Q9Y5U4NCBI Gene ID: 51141Gene Accssion: BC022475
Uniprot	Q9Y5U4
GeneID	51141;
Concentration	1.4mg/ml
Formulation	Rabbit IgG in pH7.4 PBS, 0.05% NaN ₃ , 40% Glycerol.
Storage	Store at -20°C

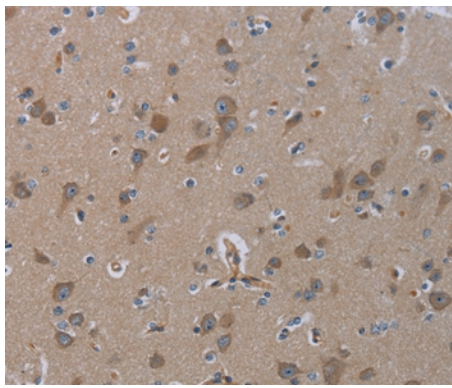
Application Details

Immunohistochemistry: 1:25-1:100

Images



Immunohistochemical analysis of paraffin-embedded Human esophagus cancer tissue using #36556 at dilution 1/30.



Immunohistochemical analysis of paraffin-embedded Human brain tissue using #36556 at dilution 1/30.

Background

The protein encoded by this gene is highly similar to the protein product encoded by gene INSIG1. Both INSIG1 protein and this protein are endoplasmic reticulum proteins that block the processing of sterol regulatory element binding proteins (SREBPs) by binding to SREBP cleavage-activating protein (SCAP), and thus prevent SCAP from escorting SREBPs to the Golgi.

Note: This product is for in vitro research use only