

ITGAE Antibody

Catalog No: #36557

Orders: order@signalwayantibody.com

Support: tech@signalwayantibody.com

Description

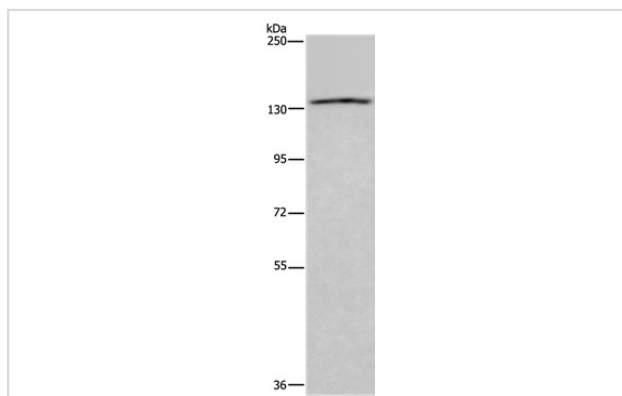
Product Name	ITGAE Antibody
Host Species	Rabbit
Clonality	Polyclonal
Purification	Antigen affinity purification.
Applications	WB IHC
Species Reactivity	Hu
Specificity	The antibody detects endogenous levels of total ITGAE protein.
Immunogen Type	Recombinant Protein
Immunogen Description	Fusion protein corresponding to a region derived from internal residues of human integrin, alpha E (antigen CD103, human mucosal lymphocyte antigen 1; alpha polypeptide)
Target Name	ITGAE
Other Names	CD103; HUMINAE
Accession No.	Swiss-Prot#: P38570NCBI Gene ID: 3682Gene Accssion: BC113436
Uniprot	P38570
GeneID	3682;
SDS-PAGE MW	130kd
Concentration	2.3mg/ml
Formulation	Rabbit IgG in pH7.4 PBS, 0.05% NaN ₃ , 40% Glycerol.
Storage	Store at -20°C

Application Details

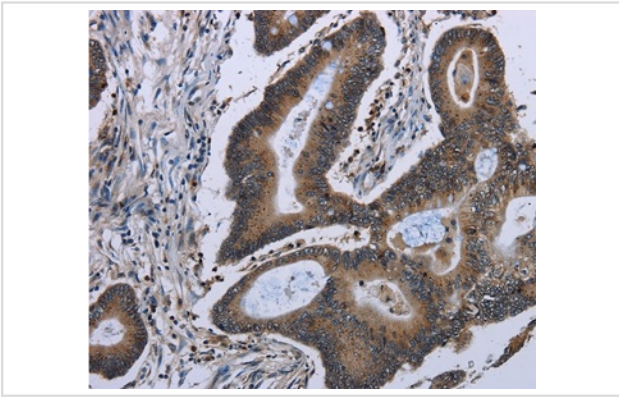
Western blotting: 1:200-1:1000

Immunohistochemistry: 1:50-1:200

Images



Gel: 6%SDS-PAGE
 Lysate: 40ug LoVo cell
 Primary antibody: 1/550 dilution
 Secondary antibody dilution: 1/8000
 Exposure time: 3 minutes



Immunohistochemical analysis of paraffin-embedded Human colon cancer tissue using #36557 at dilution 1/50.

Background

Integrins are heterodimeric integral membrane proteins composed of an alpha chain and a beta chain. This gene encodes an I-domain-containing alpha integrin that undergoes post-translational cleavage in the extracellular domain, yielding disulfide-linked heavy and light chains. In combination with the beta 7 integrin, this protein forms the E-cadherin binding integrin known as the human mucosal lymphocyte-1 antigen. This protein is preferentially expressed in human intestinal intraepithelial lymphocytes (IEL), and in addition to a role in adhesion, it may serve as an accessory molecule for IEL activation.

Note: This product is for in vitro research use only