

ITLN1 Antibody

Catalog No: #36560

Orders: order@signalwayantibody.com

Support: tech@signalwayantibody.com

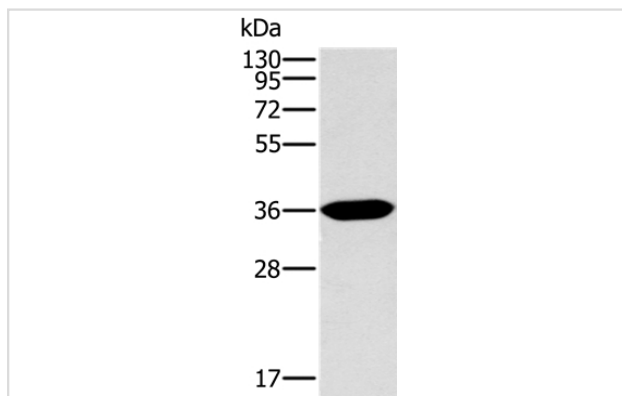
Description

Product Name	ITLN1 Antibody
Host Species	Rabbit
Clonality	Polyclonal
Purification	Antigen affinity purification.
Applications	WB
Species Reactivity	Hu
Specificity	The antibody detects endogenous levels of total ITLN1 protein.
Immunogen Type	Recombinant Protein
Immunogen Description	Fusion protein corresponding to a region derived from internal residues of human intelectin 1 (galactofuranose binding)
Target Name	ITLN1
Other Names	HL1; LFR; HL-1; INTL; ITLN; hIntL; omentin
Accession No.	Swiss-Prot#: Q8WWA0NCBI Gene ID: 55600Gene Accssion: BC020664/Q8WWA0
Uniprot	Q8WWA0
GeneID	55600;
SDS-PAGE MW	35kd
Concentration	0.8mg/ml
Formulation	Rabbit IgG in pH7.4 PBS, 0.05% NaN ₃ , 40% Glycerol.
Storage	Store at -20°C

Application Details

Western blotting: 1:1000-1:5000

Images



Gel: 10%SDS-PAGE
 Lysates (from left to right): Human fetal intestine tissue
 Amount of lysate: 40ug per lane
 Primary antibody: 1/400 dilution
 Secondary antibody dilution: 1/8000
 Exposure time: 2 minutes

Background

Intelectin-1, also known as the intestinal lactoferrin receptor, is a protein that in humans is encoded by the ITLN1 gene. Intelectin-1 functions both as

a receptor for bacterial arabinogalactans and for lactoferrin. Has no effect on basal glucose uptake but enhances insulin-stimulated glucose uptake in adipocytes. Increases AKT phosphorylation in the absence and presence of insulin. May play a role in the defense system against microorganisms. May specifically recognize carbohydrate chains of pathogens and bacterial components containing galactofuranosyl residues, in a calcium-dependent manner.

Note: This product is for in vitro research use only