

## KARS Antibody

Catalog No: #36565

Orders: order@signalwayantibody.com

Support: tech@signalwayantibody.com

## Description

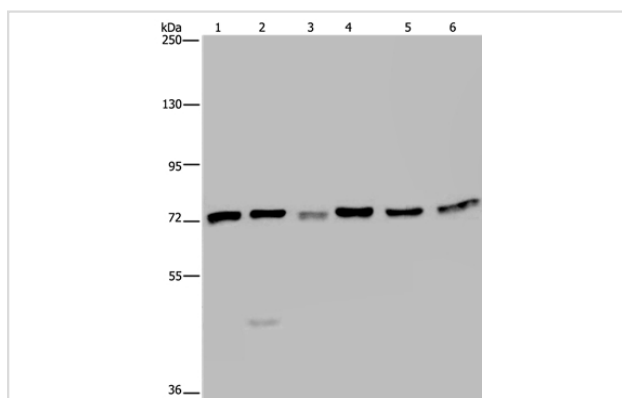
Product Name	KARS Antibody
Host Species	Rabbit
Clonality	Polyclonal
Purification	Antigen affinity purification.
Applications	WB IHC
Species Reactivity	Hu
Specificity	The antibody detects endogenous levels of total KARS protein.
Immunogen Type	Recombinant Protein
Immunogen Description	Fusion protein corresponding to residues near the C terminal of human lysyl-tRNA synthetase
Target Name	KARS
Other Names	KRS; KARS1; KARS2; CMTRIB; DFNB89
Accession No.	Swiss-Prot#: Q15046NCBI Gene ID: 3735Gene Accssion: BC004132
Uniprot	Q15046
GeneID	3735;
SDS-PAGE MW	68kd
Concentration	2.5mg/ml
Formulation	Rabbit IgG in pH7.4 PBS, 0.05% NaN <sub>3</sub> , 40% Glycerol.
Storage	Store at -20°C

## Application Details

Western blotting: 1:500-1:2000

Immunohistochemistry: 1:100-1:300

## Images



Gel: 6%SDS-PAGE

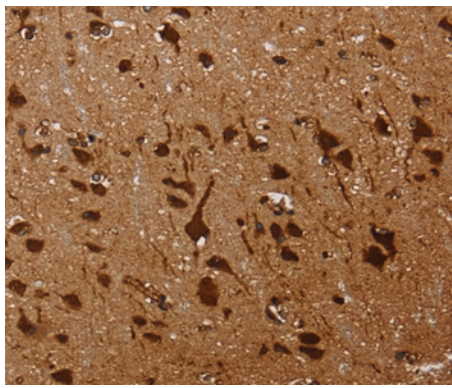
Lysates (from left to right): K562, A549, HT-29, 293T, HeLa and Jurkat cell

Amount of lysate: 40ug per lane

Primary antibody: 1/350 dilution

Secondary antibody dilution: 1/8000

Exposure time: 20 seconds



Immunohistochemical analysis of paraffin-embedded Human brain tissue using #36565 at dilution 1/60.

## Background

Aminoacyl-tRNA synthetases are a class of enzymes that charge tRNAs with their cognate amino acids. Lysyl-tRNA synthetase is a homodimer localized to the cytoplasm which belongs to the class II family of tRNA synthetases. It has been shown to be a target of autoantibodies in the human autoimmune diseases, polymyositis or dermatomyositis. Alternatively spliced transcript variants encoding different isoforms have been found for this gene.

Note: This product is for in vitro research use only