

KIF1C Antibody

Catalog No: #36569

Orders: order@signalwayantibody.com

Support: tech@signalwayantibody.com

Description

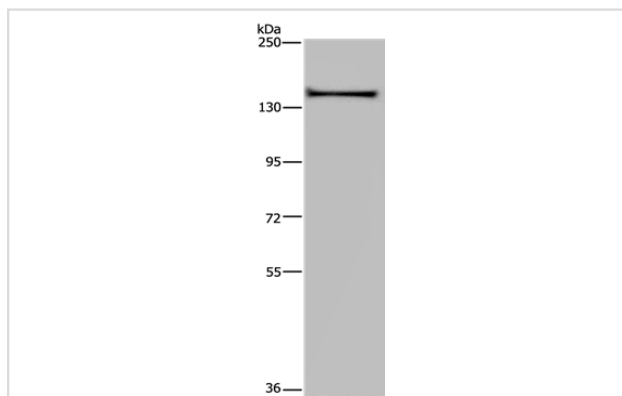
Product Name	KIF1C Antibody
Host Species	Rabbit
Clonality	Polyclonal
Purification	Antigen affinity purification.
Applications	WB IHC
Species Reactivity	Hu
Specificity	The antibody detects endogenous levels of total KIF1C protein.
Immunogen Type	Recombinant Protein
Immunogen Description	Fusion protein corresponding to a region derived from internal residues of human kinesin family member 1C
Target Name	KIF1C
Other Names	SAX2; LTXS1; SATX2; SPAX2; SPG58
Accession No.	Swiss-Prot#: O43896NCBI Gene ID: 10749Gene Accssion: BC034993
Uniprot	O43896
GeneID	10749;
SDS-PAGE MW	123kd
Concentration	2.7mg/ml
Formulation	Rabbit IgG in pH7.4 PBS, 0.05% NaN ₃ , 40% Glycerol.
Storage	Store at -20°C

Application Details

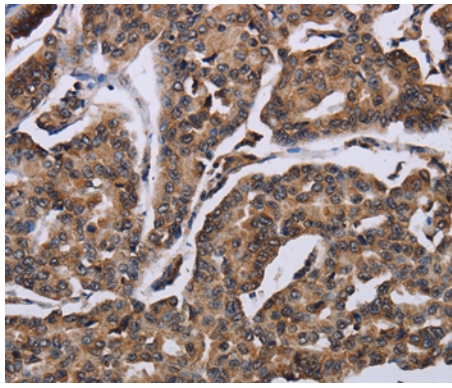
Western blotting: 1:200-1:1000

Immunohistochemistry: 1:50-1:200

Images



Gel: 6%SDS-PAGE
Lysate: 40ug A549 cell
Primary antibody: 1/200 dilution
Secondary antibody dilution: 1/8000
Exposure time: 20 seconds



Immunohistochemical analysis of paraffin-embedded Human breast cancer tissue using #36569 at dilution 1/60.

Background

The kinesins constitute a large family of microtubule-dependent motor proteins, which are responsible for the distribution of numerous organelles, vesicles and macromolecular complexes throughout the cell. Individual kinesin members play crucial roles in cell division, intracellular transport, and membrane trafficking events including endocytosis and transcytosis. KIF1C is a member of the KIF1/Unc104 family of kinesin-like proteins, which are involved in the transport of mitochondria or synaptic vesicles in axons. Human KIF1C maps to chromosome 17p13 and encodes a predicted 1,103 amino acid protein with abundant expression in heart and skeletal muscle. Tyrosine phosphorylation is a putative regulator of KIF1C mediated retrograde transport of Golgi vesicles to the endoplasmic reticulum. KIF1C is capable of forming homodimers and can noncovalently associate with 14-3-3 beta, gamma, epsilon and zeta. In mouse macrophages, KIF1C is required for anthrax lethal toxin resistance.

Note: This product is for in vitro research use only