

KIF2A Antibody

Catalog No: #36570

Orders: order@signalwayantibody.comSupport: tech@signalwayantibody.com

Description

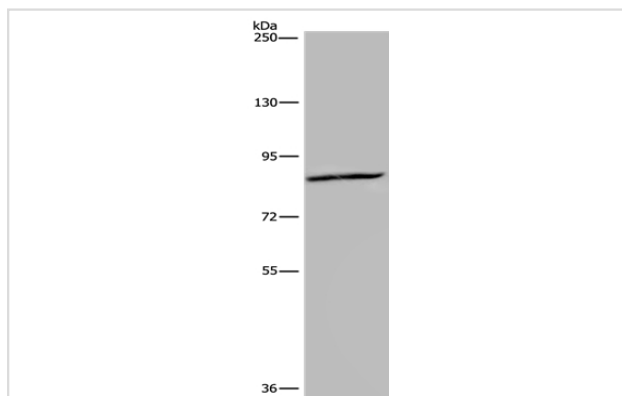
Product Name	KIF2A Antibody
Host Species	Rabbit
Clonality	Polyclonal
Purification	Antigen affinity purification.
Applications	WB IHC
Species Reactivity	Hu
Specificity	The antibody detects endogenous levels of total KIF2A protein.
Immunogen Type	Recombinant Protein
Immunogen Description	Fusion protein corresponding to residues near the N terminal of human kinesin heavy chain member 2A
Target Name	KIF2A
Other Names	HK2; KIF2; CDCBM3
Accession No.	Swiss-Prot#: O00139NCBI Gene ID: 3796Gene Accssion: BC031828
Uniprot	O00139
GeneID	3796;
SDS-PAGE MW	80kd
Concentration	3.1mg/ml
Formulation	Rabbit IgG in pH7.4 PBS, 0.05% NaN ₃ , 40% Glycerol.
Storage	Store at -20°C

Application Details

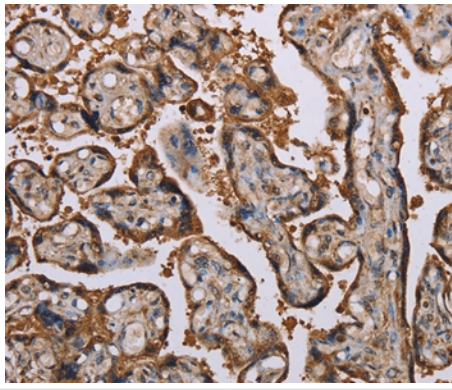
Western blotting: 1:200-1:1000

Immunohistochemistry: 1:100-1:300

Images



Gel: 6%SDS-PAGE
Lysate: 40ug Hela cell
Primary antibody: 1/350 dilution
Secondary antibody dilution: 1/8000
Exposure time: 20 seconds



Immunohistochemical analysis of paraffin-embedded Human placenta tissue using #36570 at dilution 1/70.

Background

The protein encoded by this gene is a plus end-directed motor required for normal mitotic progression. The encoded protein is required for normal spindle activity during mitosis and is necessary for normal brain development. Several transcript variants encoding different isoforms have been found for this gene.

Note: This product is for in vitro research use only