

KLHL2 Antibody

Catalog No: #36573

Orders: order@signalwayantibody.comSupport: tech@signalwayantibody.com

Description

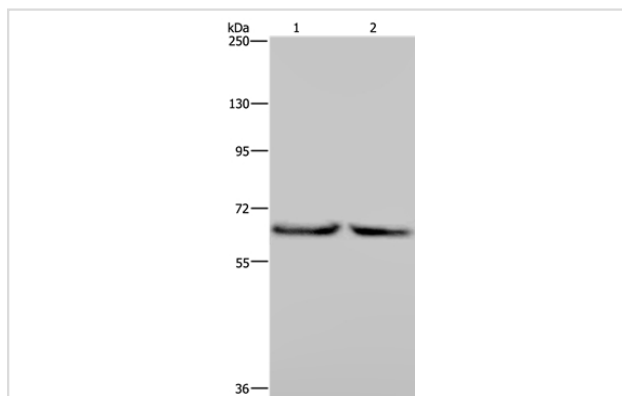
Product Name	KLHL2 Antibody
Host Species	Rabbit
Clonality	Polyclonal
Purification	Antigen affinity purification.
Applications	WB IHC
Species Reactivity	Hu
Specificity	The antibody detects endogenous levels of total KLHL2 protein.
Immunogen Type	Recombinant Protein
Immunogen Description	Fusion protein corresponding to a region derived from internal residues of human kelch-like family member 2
Target Name	KLHL2
Other Names	MAV; MAYVEN; ABP-KELCH
Accession No.	Swiss-Prot#: O95198NCBI Gene ID: 11275Gene Accssion: BC036468
Uniprot	O95198
GeneID	11275;
SDS-PAGE MW	66kd
Concentration	0.9mg/ml
Formulation	Rabbit IgG in pH7.4 PBS, 0.05% NaN ₃ , 40% Glycerol.
Storage	Store at -20°C

Application Details

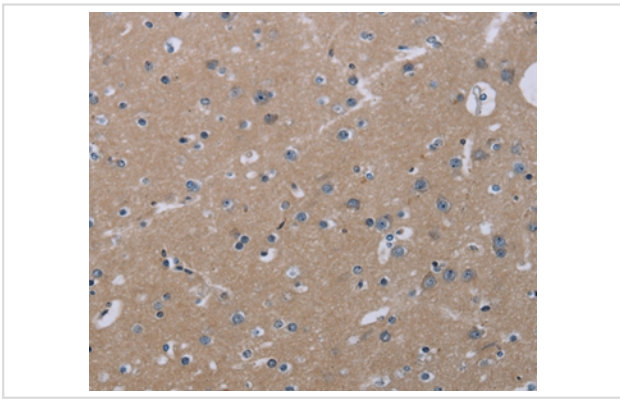
Western blotting: 1:200-1:1000

Immunohistochemistry: 1:25-1:100

Images



Gel: 6%SDS-PAGE
 Lysates (from left to right): Jurkat and K562 cell
 Amount of lysate: 100ug per lane
 Primary antibody: 1/200 dilution
 Secondary antibody dilution: 1/8000
 Exposure time: 2 minutes



Immunohistochemical analysis of paraffin-embedded Human brain tissue using #36573 at dilution 1/20.

Background

KLHL2 (kelch-like protein 2), also known as actin-binding protein Mayven, is a 593 amino acid actin-binding protein. Highly expressed in brain, KLHL2 is thought to play a role in the organization of the actin cytoskeleton in brain cells.

Note: This product is for in vitro research use only