

KLK6 Antibody

Catalog No: #36575

Orders: order@signalwayantibody.com

Support: tech@signalwayantibody.com

Description

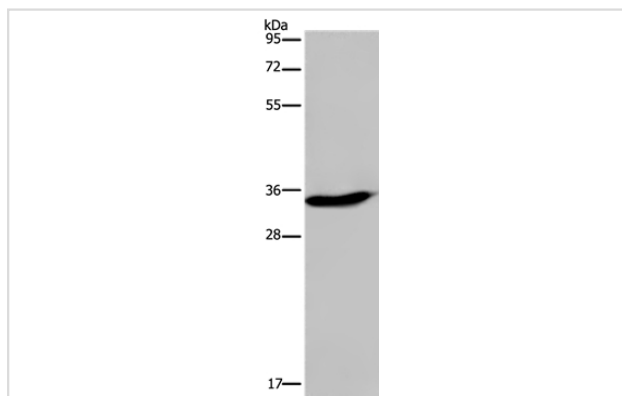
Product Name	KLK6 Antibody
Host Species	Rabbit
Clonality	Polyclonal
Purification	Antigen affinity purification.
Applications	WB IHC
Species Reactivity	Hu
Specificity	The antibody detects endogenous levels of total KLK6 protein.
Immunogen Type	Recombinant Protein
Immunogen Description	Fusion protein corresponding to a region derived from internal residues of human kallikrein-related peptidase 6
Target Name	KLK6
Other Names	hK6; Bssp; Kik7; SP59; PRSS9; PRSS18
Accession No.	Swiss-Prot#: Q92876NCBI Gene ID: 5653Gene Accssion: BC015525
Uniprot	Q92876
GeneID	5653;
SDS-PAGE MW	27kd
Concentration	2.7mg/ml
Formulation	Rabbit IgG in pH7.4 PBS, 0.05% NaN ₃ , 40% Glycerol.
Storage	Store at -20°C

Application Details

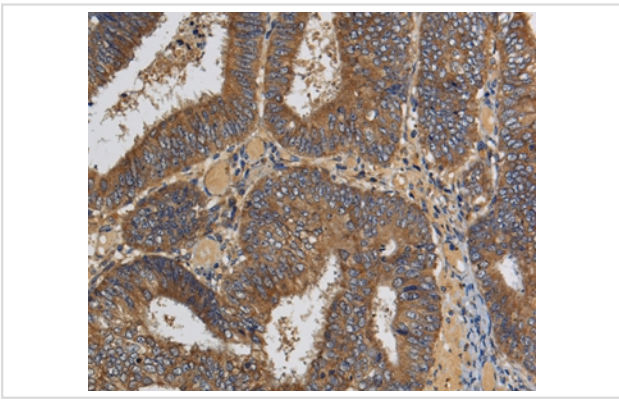
Western blotting: 1:500-1:2000

Immunohistochemistry: 1:100-1:300

Images



Gel: 10%SDS-PAGE
Lysate: 40ug A375 cell
Primary antibody: 1/300 dilution
Secondary antibody dilution: 1/8000
Exposure time: 1 minute



Immunohistochemical analysis of paraffin-embedded Human colon cancer tissue using #36575 at dilution 1/60.

Background

Kallikreins are a subgroup of serine proteases having diverse physiological functions. Growing evidence suggests that many kallikreins are implicated in carcinogenesis and some have potential as novel cancer and other disease biomarkers. This gene is one of the fifteen kallikrein subfamily members located in a cluster on chromosome 19. The encoded enzyme is regulated by steroid hormones. In tissue culture, the enzyme has been found to generate amyloidogenic fragments from the amyloid precursor protein, suggesting a potential for involvement in Alzheimer's disease. Multiple alternatively spliced transcript variants that encode different isoforms have been identified for this gene.

Note: This product is for in vitro research use only