

KLK11 Antibody

Catalog No: #36576

Orders: order@signalwayantibody.comSupport: tech@signalwayantibody.com

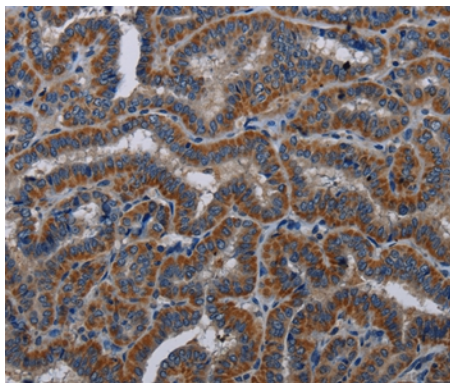
Description

Product Name	KLK11 Antibody
Host Species	Rabbit
Clonality	Polyclonal
Purification	Antigen affinity purification.
Applications	IHC
Species Reactivity	Hu
Specificity	The antibody detects endogenous levels of total KLK11 protein.
Immunogen Type	Recombinant Protein
Immunogen Description	Fusion protein corresponding to residues near the C terminal of human kallikrein-related peptidase 11
Target Name	KLK11
Other Names	TLSP; PRSS20
Accession No.	Swiss-Prot#: Q9UBX7NCBI Gene ID: 11012Gene Accssion: BC022068
Uniprot	Q9UBX7
GeneID	11012;
Concentration	1.9mg/ml
Formulation	Rabbit IgG in pH7.4 PBS, 0.05% NaN ₃ , 40% Glycerol.
Storage	Store at -20°C

Application Details

Immunohistochemistry: 1:50-1:200

Images



Immunohistochemical analysis of paraffin-embedded Human thyroid cancer tissue using #36576 at dilution 1/40.

Background

Kallikreins are a subgroup of serine proteases having diverse physiological functions. Growing evidence suggests that many kallikreins are implicated in carcinogenesis and some have potential as novel cancer and other disease biomarkers. This gene is one of the fifteen kallikrein subfamily members located in a cluster on chromosome 19. Alternate splicing of this gene results in multiple transcript variants encoding distinct isoforms which are differentially expressed.

Note: This product is for in vitro research use only