

KLK8 Antibody

Catalog No: #36577

Orders: order@signalwayantibody.comSupport: tech@signalwayantibody.com

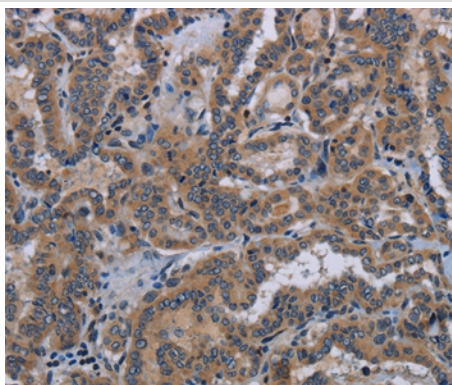
Description

Product Name	KLK8 Antibody
Host Species	Rabbit
Clonality	Polyclonal
Purification	Antigen affinity purification.
Applications	IHC
Species Reactivity	Hu
Specificity	The antibody detects endogenous levels of total KLK8 protein.
Immunogen Type	Recombinant Protein
Immunogen Description	Fusion protein corresponding to a region derived from internal residues of human kallikrein-related peptidase 8
Target Name	KLK8
Other Names	NP; HNP; NRPN; PRSS19; TADG14
Accession No.	Swiss-Prot#: O60259NCBI Gene ID: 11202Gene Accssion: NP_009127
Uniprot	O60259
GeneID	11202;
Concentration	1.2mg/ml
Formulation	Rabbit IgG in pH7.4 PBS, 0.05% NaN ₃ , 40% Glycerol.
Storage	Store at -20°C

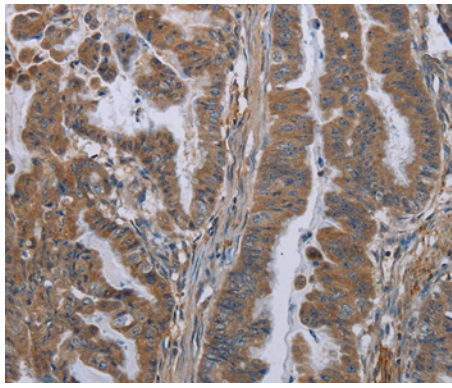
Application Details

Immunohistochemistry: 1:25-1:100

Images



Immunohistochemical analysis of paraffin-embedded Human thyroid cancer tissue using #36577 at dilution 1/30.



Immunohistochemical analysis of paraffin-embedded Human esophagus cancer tissue using #36577 at dilution 1/30.

Background

Kallikreins are a subgroup of serine proteases having diverse physiological functions. Growing evidence suggests that many kallikreins are implicated in carcinogenesis and some have potential as novel cancer and other disease biomarkers. This gene is one of the fifteen kallikrein subfamily members located in tandem in a gene cluster on chromosome 19. The encoded protein may be involved in proteolytic cascade in the skin and may serve as a biomarker for ovarian cancer. Alternate splicing of this gene results in multiple transcript variants encoding different isoforms.

Note: This product is for in vitro research use only