

## LAMB3 Antibody

Catalog No: #36581

Orders: [order@signalwayantibody.com](mailto:order@signalwayantibody.com)Support: [tech@signalwayantibody.com](mailto:tech@signalwayantibody.com)

## Description

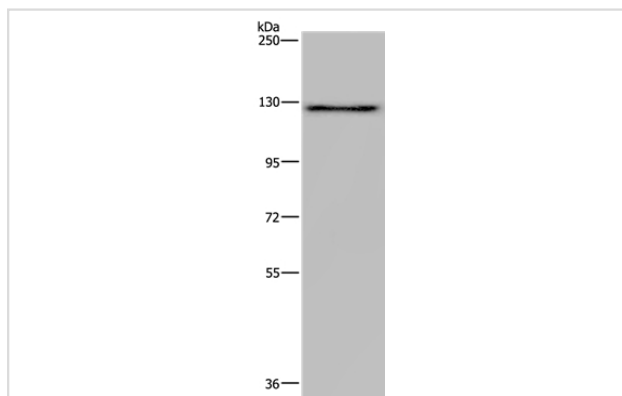
Product Name	LAMB3 Antibody
Host Species	Rabbit
Clonality	Polyclonal
Purification	Antigen affinity purification.
Applications	WB IHC
Species Reactivity	Hu
Specificity	The antibody detects endogenous levels of total LAMB3 protein.
Immunogen Type	Recombinant Protein
Immunogen Description	Fusion protein corresponding to residues near the C terminal of human laminin, beta 3
Target Name	LAMB3
Other Names	LAM5; LAMNB1; BM600-125KDA
Accession No.	Swiss-Prot#: Q13751NCBI Gene ID: 3914Gene Accssion: BC075838
Uniprot	Q13751
GeneID	3914;
SDS-PAGE MW	130kd
Concentration	2mg/ml
Formulation	Rabbit IgG in pH7.4 PBS, 0.05% NaN <sub>3</sub> , 40% Glycerol.
Storage	Store at -20°C

## Application Details

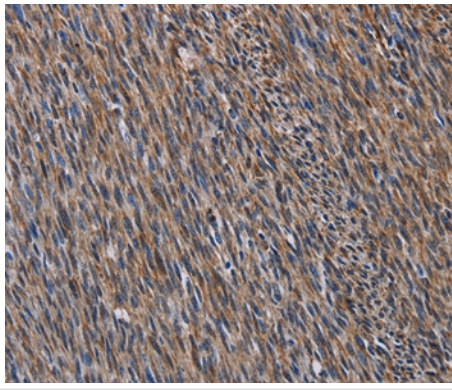
Western blotting: 1:200-1:1000

Immunohistochemistry: 1:50-1:200

## Images



Gel: 6%SDS-PAGE  
Lysate: 40ug PC3 cell  
Primary antibody: 1/200 dilution  
Secondary antibody dilution: 1/8000  
Exposure time: 20 seconds



Immunohistochemical analysis of paraffin-embedded Human sarcoma tissue using #36581 at dilution 1/40.

## Background

The product encoded by this gene is a laminin that belongs to a family of basement membrane proteins. This protein is a beta subunit laminin, which together with an alpha and a gamma subunit, forms laminin-5. Mutations in this gene cause epidermolysis bullosa junctional Herlitz type, and generalized atrophic benign epidermolysis bullosa, diseases that are characterized by blistering of the skin. Multiple alternatively spliced transcript variants that encode the same protein have been found for this gene.

Note: This product is for in vitro research use only