

TRIM13 Antibody

Catalog No: #36585

Orders: order@signalwayantibody.comSupport: tech@signalwayantibody.com

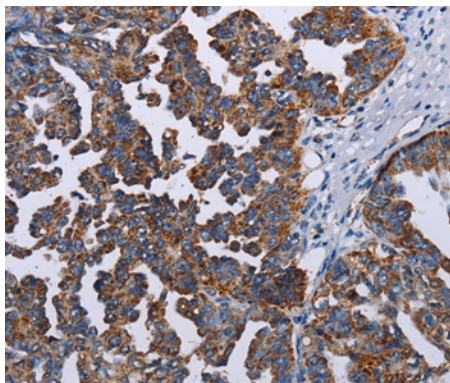
Description

Product Name	TRIM13 Antibody
Host Species	Rabbit
Clonality	Polyclonal
Purification	Antigen affinity purification.
Applications	IHC
Species Reactivity	Hu
Specificity	The antibody detects endogenous levels of total TRIM13 protein.
Immunogen Type	Recombinant Protein
Immunogen Description	Fusion protein corresponding to a region derived from internal residues of human tripartite motif containing 13
Target Name	TRIM13
Other Names	CAR; LEU5; RFP2; DLEU5; RNF77
Accession No.	Swiss-Prot#: O60858NCBI Gene ID: 10206Gene Accssion: BC003579
Uniprot	O60858
GeneID	10206;
Concentration	1.5mg/ml
Formulation	Rabbit IgG in pH7.4 PBS, 0.05% NaN ₃ , 40% Glycerol.
Storage	Store at -20°C

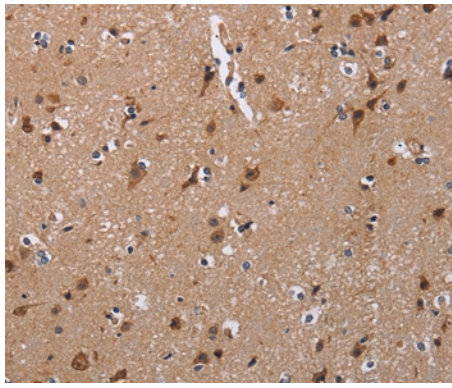
Application Details

Immunohistochemistry: 1:25-1:100

Images



Immunohistochemical analysis of paraffin-embedded Human ovarian cancer tissue using #36585 at dilution 1/30.



Immunohistochemical analysis of paraffin-embedded Human brain tissue using #36585 at dilution 1/30.

Background

This gene encodes a member of the tripartite motif (TRIM) family. The TRIM motif includes three zinc-binding domains, a RING, a B-box type 1 and a B-box type 2, and a coiled-coil region. This gene is located on chromosome 13 within the minimal deletion region for B-cell chronic lymphocytic leukemia. Multiple alternatively spliced transcript variants have been found for this gene.

Note: This product is for in vitro research use only