

## LRRC57 Antibody

Catalog No: #36590

Orders: [order@signalwayantibody.com](mailto:order@signalwayantibody.com)Support: [tech@signalwayantibody.com](mailto:tech@signalwayantibody.com)

## Description

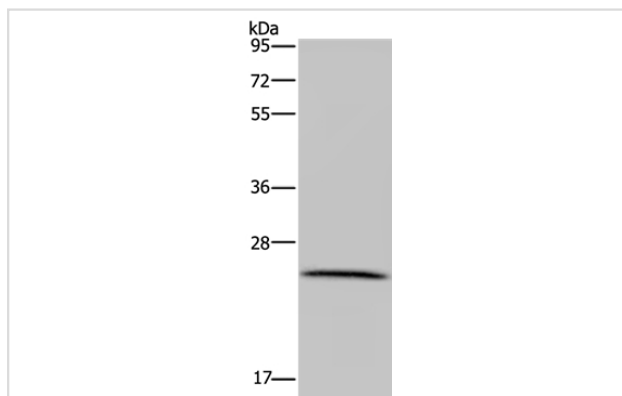
Product Name	LRRC57 Antibody
Host Species	Rabbit
Clonality	Polyclonal
Purification	Antigen affinity purification.
Applications	WB IHC
Species Reactivity	Hu
Specificity	The antibody detects endogenous levels of total LRRC57 protein.
Immunogen Type	Recombinant Protein
Immunogen Description	Full length fusion protein
Target Name	LRRC57
Other Names	LRC57;DKFZp686H1865;FLJ36812
Accession No.	Swiss-Prot#: Q8N9N7NCBI Gene ID: 255252Gene Accssion: BC058935
Uniprot	Q8N9N7
GeneID	255252;
SDS-PAGE MW	27kd
Concentration	1.7mg/ml
Formulation	Rabbit IgG in pH7.4 PBS, 0.05% NaN <sub>3</sub> , 40% Glycerol.
Storage	Store at -20°C

## Application Details

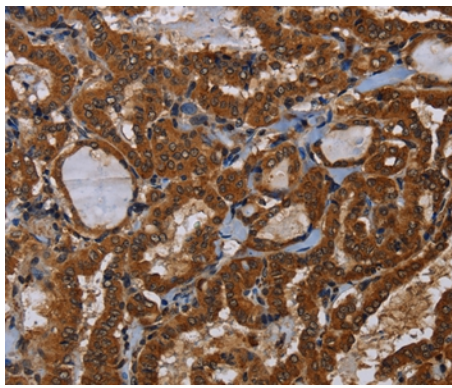
Western blotting: 1:200-1:1000

Immunohistochemistry: 1:50-1:200

## Images



Gel: 10%SDS-PAGE  
Lysate: 40ug HT-29 cell  
Primary antibody: 1/200 dilution  
Secondary antibody dilution: 1/8000  
Exposure time: 5 minutes



Immunohistochemical analysis of paraffin-embedded Human thyroid cancer tissue using #36590 at dilution 1/40.

## Background

LRRC57 (leucine rich repeat containing 57) is a 239 amino acid protein that contains eight LRR repeats and is encoded by a gene that maps to human chromosome 15q15.2. Chromosome 15 houses over 700 genes and comprises nearly 3% of the human genome. Angelman syndrome, Prader-Willi syndrome, Tay-Sachs disease and Marfan syndrome are all associated with defects in chromosome 15-localized genes.

Note: This product is for in vitro research use only