

## LUM Antibody

Catalog No: #36591

Orders: [order@signalwayantibody.com](mailto:order@signalwayantibody.com)Support: [tech@signalwayantibody.com](mailto:tech@signalwayantibody.com)

## Description

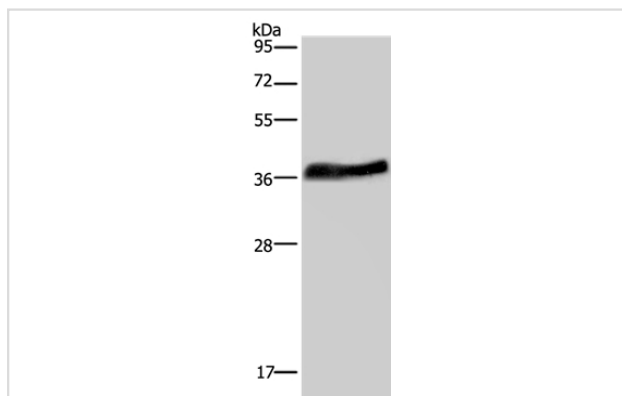
Product Name	LUM Antibody
Host Species	Rabbit
Clonality	Polyclonal
Purification	Antigen affinity purification.
Applications	WB IHC
Species Reactivity	Hu
Specificity	The antibody detects endogenous levels of total LUM protein.
Immunogen Type	Recombinant Protein
Immunogen Description	Fusion protein corresponding to a region derived from internal residues of human lumican
Target Name	LUM
Other Names	LDC; SLRR2D
Accession No.	Swiss-Prot#: P51884NCBI Gene ID: 4060Gene Accssion: BC007038
Uniprot	P51884
GeneID	4060;
SDS-PAGE MW	38kd
Concentration	1.6mg/ml
Formulation	Rabbit IgG in pH7.4 PBS, 0.05% NaN <sub>3</sub> , 40% Glycerol.
Storage	Store at -20°C

## Application Details

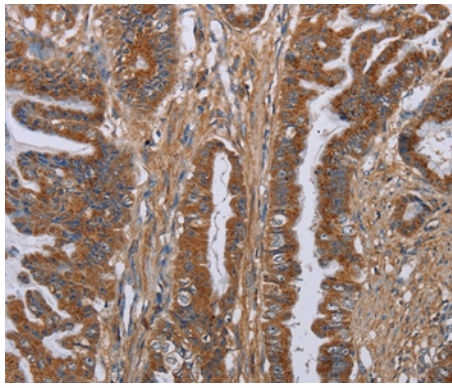
Western blotting: 1:200-1:1000

Immunohistochemistry: 1:50-1:200

## Images



Gel: 10%SDS-PAGE  
Lysate: 40ug Jurkat cell  
Primary antibody: 1/200 dilution  
Secondary antibody dilution: 1/8000  
Exposure time: 20 seconds



Immunohistochemical analysis of paraffin-embedded Human esophagus cancer tissue using #36591 at dilution 1/40.

## Background

This gene encodes a member of the small leucine-rich proteoglycan (SLRP) family that includes decorin, biglycan, fibromodulin, keratocan, epiphygan, and osteoglycin. In these bifunctional molecules, the protein moiety binds collagen fibrils and the highly charged hydrophilic glycosaminoglycans regulate interfibrillar spacings. Lumican is the major keratan sulfate proteoglycan of the cornea but is also distributed in interstitial collagenous matrices throughout the body. Lumican may regulate collagen fibril organization and circumferential growth, corneal transparency, and epithelial cell migration and tissue repair.

Note: This product is for in vitro research use only