

## MAGEA8 Antibody

Catalog No: #36595

Orders: order@signalwayantibody.com

Support: tech@signalwayantibody.com

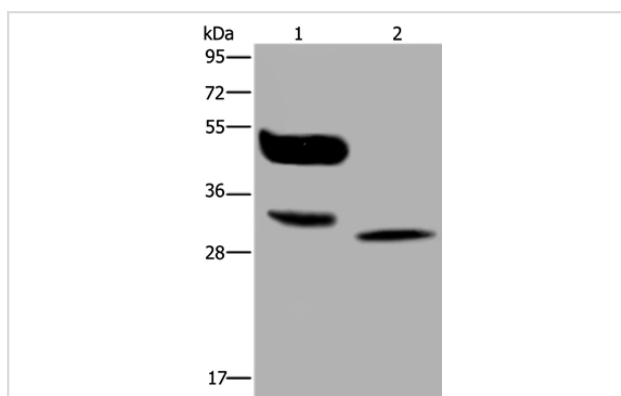
## Description

Product Name	MAGEA8 Antibody
Host Species	Rabbit
Clonality	Polyclonal
Purification	Antigen affinity purification.
Applications	WB
Species Reactivity	Hu
Specificity	The antibody detects endogenous levels of total MAGEA8 protein.
Immunogen Type	Recombinant Protein
Immunogen Description	Full length fusion protein
Target Name	MAGEA8
Other Names	CT1.8; MAGE8
Accession No.	Swiss-Prot#: P43361NCBI Gene ID: 4107Gene Accssion: BC002455
Uniprot	P43361
GeneID	4107;
SDS-PAGE MW	35kd
Concentration	1.8mg/ml
Formulation	Rabbit IgG in pH7.4 PBS, 0.05% NaN <sub>3</sub> , 40% Glycerol.
Storage	Store at -20°C

## Application Details

Western blotting: 1:500-1:2000

## Images



Gel: 10%SDS-PAGE

Lysates (from left to right): A375 cell and human lung cancer tissue

Amount of lysate: 40ug per lane

Primary antibody: 1/400 dilution

Secondary antibody dilution: 1/8000

Exposure time: 30 seconds

## Background

This gene is a member of the MAGEA gene family. The members of this family encode proteins with 50 to 80% sequence identity to each other. The promoters and first exons of the MAGEA genes show considerable variability, suggesting that the existence of this gene family enables the same

function to be expressed under different transcriptional controls. The MAGEA genes are clustered at chromosomal location Xq28. They have been implicated in some hereditary disorders, such as dyskeratosis congenita. Multiple alternatively spliced variants, encoding the same protein, have been identified.?

---

Note: This product is for in vitro research use only