

TAB1 Antibody

Catalog No: #36598

Orders: order@signalwayantibody.comSupport: tech@signalwayantibody.com

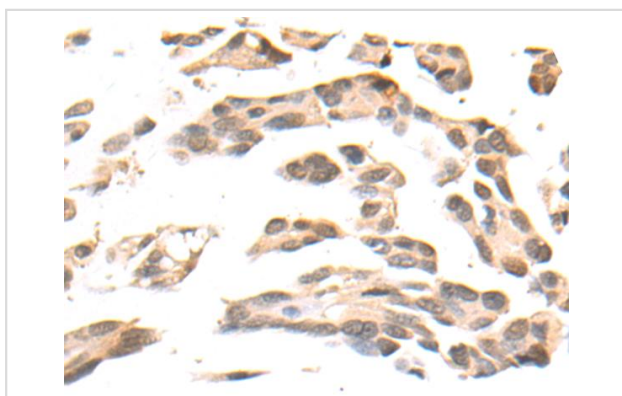
Description

Product Name	TAB1 Antibody
Host Species	Rabbit
Clonality	Polyclonal
Purification	Antigen affinity purification.
Applications	IHC
Species Reactivity	Hu
Specificity	The antibody detects endogenous levels of total TAB1 protein.
Immunogen Type	Recombinant Protein
Immunogen Description	Fusion protein of human TAB1
Target Name	TAB1
Other Names	3'-Tab1; MAP3K7IP1
Accession No.	Swiss-Prot#: Q15750NCBI Gene ID: 10454Gene Accssion: BC050554
Uniprot	Q15750
GeneID	10454;
Concentration	1.1 mg/ml
Formulation	Rabbit IgG in pH7.4 PBS, 0.05% NaN ₃ , 40% Glycerol.
Storage	Store at -20°C

Application Details

IHC 1:50-100

Images



The image on the left is immunohistochemistry of paraffinembedded Human colorectal cancer tissue using (TAB1 Antibody) at dilution 1/75

Background

The protein encoded by this gene was identified as a regulator of the MAP kinase kinase kinase MAP3K7/TAK1, which is known to mediate various intracellular signaling pathways, such as those induced by TGF beta, interleukin 1, and WNT-1. This protein interacts and thus activates TAK1 kinase. It has been shown that the C-terminal portion of this protein is sufficient for binding and activation of TAK1, while a portion of the N-terminus acts as a dominant-negative inhibitor of TGF beta, suggesting that this protein may function as a mediator between TGF beta receptors and TAK1. This protein

can also interact with and activate the mitogen-activated protein kinase 14 (MAPK14/p38alpha), and thus represents an alternative activation pathway, in addition to the MAPKK pathways, which contributes to the biological responses of MAPK14 to various stimuli. Alternatively spliced transcript variants encoding distinct isoforms have been reported.

Note: This product is for in vitro research use only