

TAB3 Antibody

Catalog No: #36599

Orders: order@signalwayantibody.com

Support: tech@signalwayantibody.com

Description

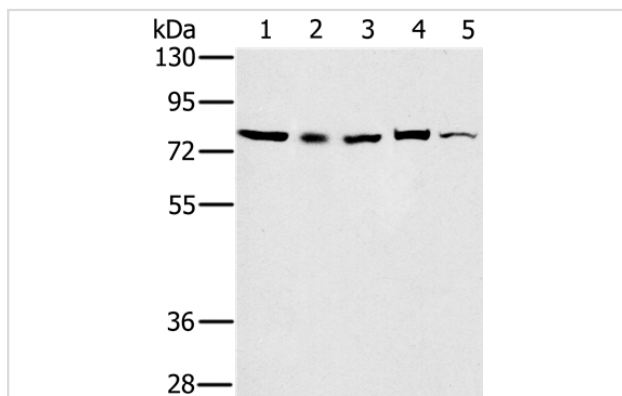
Product Name	TAB3 Antibody
Host Species	Rabbit
Clonality	Polyclonal
Purification	Antigen affinity purification.
Applications	WB IHC
Species Reactivity	Hu Ms
Specificity	The antibody detects endogenous levels of total TAB3 protein.
Immunogen Type	Recombinant Protein
Immunogen Description	Fusion protein corresponding to residues near the N terminal of human TGF-beta activated kinase 1/MAP3K7 binding protein 3
Target Name	TAB3
Other Names	NAP1; MAP3K7IP3
Accession No.	Swiss-Prot#: Q8N5C8NCBI Gene ID: 257397Gene Accssion: BC032526/Q8N5C8
Uniprot	Q8N5C8
GeneID	257397;
SDS-PAGE MW	79kd
Concentration	2.1mg/ml
Formulation	Rabbit IgG in pH7.4 PBS, 0.05% NaN ₃ , 40% Glycerol.
Storage	Store at -20°C

Application Details

Western blotting: 1:1000-1:5000

Immunohistochemistry: 1:50-1:200

Images



Gel: 6%SDS-PAGE

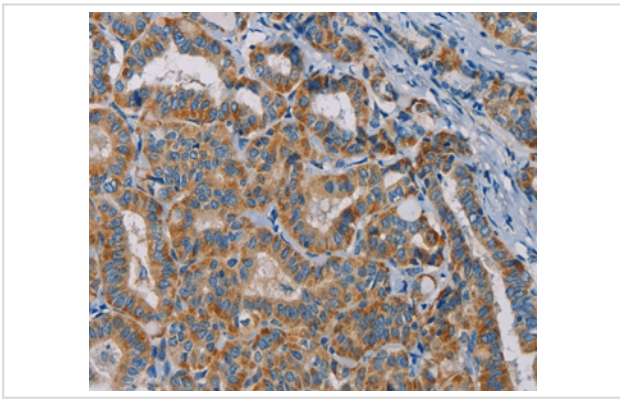
Lysates (from left to right): 293T, Raw264.7, NIH/3T3, K562 and Jurkat cell

Amount of lysate: 40ug per lane

Primary antibody: 1/800 dilution

Secondary antibody dilution: 1/8000

Exposure time: 10 seconds



Immunohistochemical analysis of paraffin-embedded Human thyroid cancer tissue using #36599 at dilution 1/25.

Background

The product of this gene functions in the NF-kappaB signal transduction pathway. The encoded protein, and the similar and functionally redundant protein MAP3K7IP2/TAB2, forms a ternary complex with the protein kinase MAP3K7/TAK1 and either TRAF2 or TRAF6 in response to stimulation with the pro-inflammatory cytokines TNF or IL-1. Subsequent MAP3K7/TAK1 kinase activity triggers a signaling cascade leading to activation of the NF-kappaB transcription factor. The human genome contains a related pseudogene.?

Note: This product is for in vitro research use only