

## ENTPD7 Antibody

Catalog No: #36615

Orders: [order@signalwayantibody.com](mailto:order@signalwayantibody.com)Support: [tech@signalwayantibody.com](mailto:tech@signalwayantibody.com)

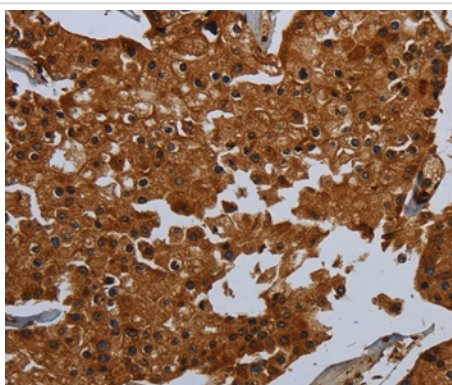
## Description

Product Name	ENTPD7 Antibody
Host Species	Rabbit
Clonality	Polyclonal
Purification	Antigen affinity purification.
Applications	IHC
Species Reactivity	Hu
Specificity	The antibody detects endogenous levels of total ENTPD7 protein.
Immunogen Type	Recombinant Protein
Immunogen Description	Fusion protein corresponding to a region derived from internal residues of human ectonucleoside triphosphate diphosphohydrolase 7
Target Name	ENTPD7
Other Names	LALP1
Accession No.	Swiss-Prot#: Q9NQZ7NCBI Gene ID: 57089Gene Accssion: BC122857
Uniprot	Q9NQZ7
GeneID	57089;
Concentration	2.6mg/ml
Formulation	Rabbit IgG in pH7.4 PBS, 0.05% NaN <sub>3</sub> , 40% Glycerol.
Storage	Store at -20°C

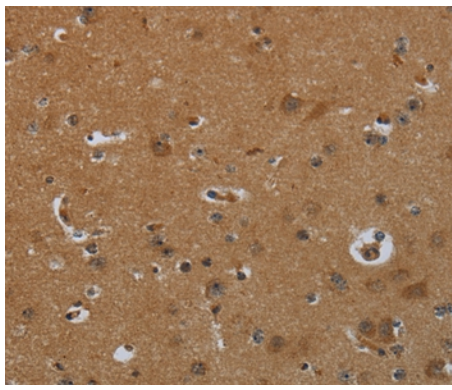
## Application Details

Immunohistochemistry: 1:50-1:200

## Images



Immunohistochemical analysis of paraffin-embedded Human prostate cancer tissue using #36615 at dilution 1/60.



Immunohistochemical analysis of paraffin-embedded Human brain tissue using #36615 at dilution 1/60.

## Background

LALP1 (lysosomal apyrase-like protein 1), also known as ENTPD7 (ectonucleoside triphosphate diphosphohydrolase 7), is a 604 amino acid multi-pass membrane protein that belongs to the GDA1/CD39 NTPase family. Preferentially hydrolyzing nucleoside 5'B'B—triphosphates, LALP1 and has an order of activity with respect to possible substrates, which is UTP > GTP > CTP.

Note: This product is for in vitro research use only