

PCK2 Antibody

Catalog No: #36616

Orders: order@signalwayantibody.com

Support: tech@signalwayantibody.com

Description

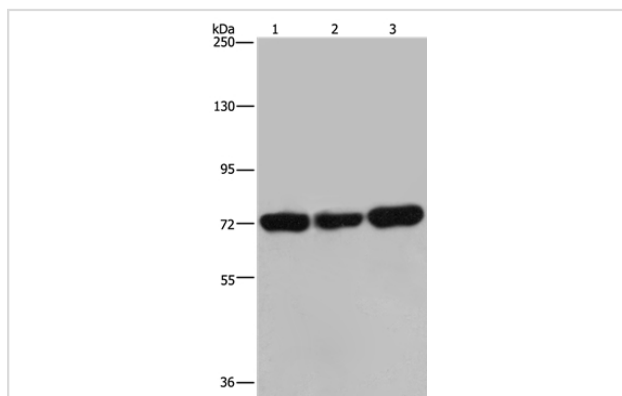
Product Name	PCK2 Antibody
Host Species	Rabbit
Clonality	Polyclonal
Purification	Antigen affinity purification.
Applications	WB IHC
Species Reactivity	Hu
Specificity	The antibody detects endogenous levels of total PCK2 protein.
Immunogen Type	Recombinant Protein
Immunogen Description	Fusion protein corresponding to a region derived from internal residues of human phosphoenolpyruvate carboxykinase 2
Target Name	PCK2
Other Names	PEPCK; PEPCK2; PEPCK-M
Accession No.	Swiss-Prot#: Q16822NCBI Gene ID: 5106Gene Accssion: BC001454
Uniprot	Q16822
GeneID	5106;
SDS-PAGE MW	71kd
Concentration	2.4mg/ml
Formulation	Rabbit IgG in pH7.4 PBS, 0.05% NaN ₃ , 40% Glycerol.
Storage	Store at -20°C

Application Details

Western blotting: 1:500-1:2000

Immunohistochemistry: 1:50-1:200

Images



Gel: 6%SDS-PAGE

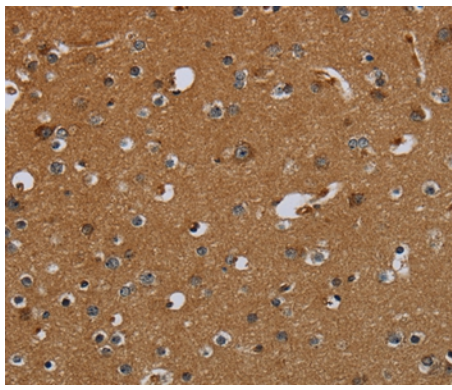
Lysates (from left to right): 293T, Jurkat and Hela cell

Amount of lysate: 40ug per lane

Primary antibody: 1/600 dilution

Secondary antibody dilution: 1/8000

Exposure time: 10 minutes



Immunohistochemical analysis of paraffin-embedded Human brain tissue using #36616 at dilution 1/60.

Background

This gene encodes a mitochondrial enzyme that catalyzes the conversion of oxaloacetate to phosphoenolpyruvate in the presence of guanosine triphosphate (GTP). A cytosolic form of this protein is encoded by a different gene and is the key enzyme of gluconeogenesis in the liver. Alternatively spliced transcript variants have been described.

Note: This product is for in vitro research use only