

## CENPU Antibody

Catalog No: #36620

Orders: [order@signalwayantibody.com](mailto:order@signalwayantibody.com)Support: [tech@signalwayantibody.com](mailto:tech@signalwayantibody.com)

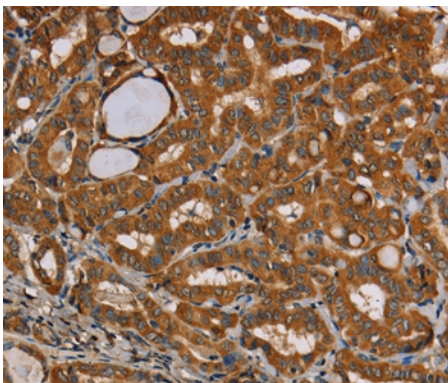
## Description

Product Name	CENPU Antibody
Host Species	Rabbit
Clonality	Polyclonal
Purification	Antigen affinity purification.
Applications	IHC
Species Reactivity	Hu
Specificity	The antibody detects endogenous levels of total CENPU protein.
Immunogen Type	Recombinant Protein
Immunogen Description	Full length fusion protein
Target Name	CENPU
Other Names	KLIP1; PBIP1; CENP50; MLF1IP; CENPU50
Accession No.	Swiss-Prot#: Q71F23 NCBI Gene ID: 79682Gene Accssion: BC031520/Q71F23
Uniprot	Q71F23
GeneID	79682;
Concentration	1.6mg/ml
Formulation	Rabbit IgG in pH7.4 PBS, 0.05% NaN <sub>3</sub> , 40% Glycerol.
Storage	Store at -20°C

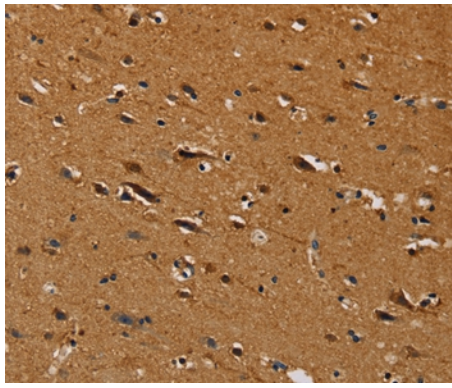
## Application Details

Immunohistochemistry: 1:50-1:200

## Images



Immunohistochemical analysis of paraffin-embedded Human thyroid cancer tissue using #36620 at dilution 1/30.



Immunohistochemical analysis of paraffin-embedded Human brain tissue using #36620 at dilution 1/30.

## Background

The centromere is a specialized chromatin domain, present throughout the cell cycle, that acts as a platform on which the transient assembly of the kinetochore occurs during mitosis. All active centromeres are characterized by the presence of long arrays of nucleosomes in which CENPA (MIM 117139) replaces histone H3 (see MIM 601128). MLF1IP, or CENPU, is an additional factor required for centromere assembly.

Note: This product is for in vitro research use only