

MTCH2 Antibody

Catalog No: #36621

Orders: order@signalwayantibody.comSupport: tech@signalwayantibody.com

Description

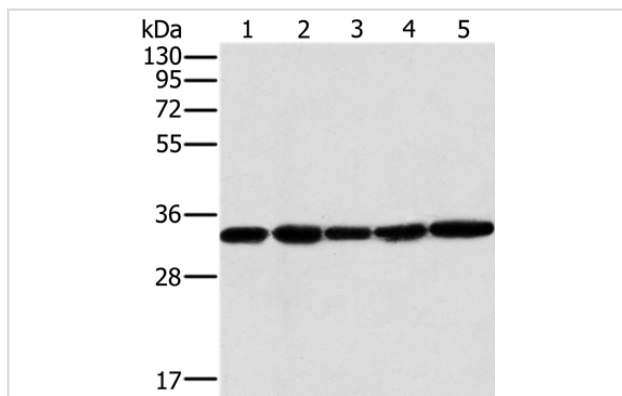
Product Name	MTCH2 Antibody
Host Species	Rabbit
Clonality	Polyclonal
Purification	Antigen affinity purification.
Applications	WB IHC
Species Reactivity	Hu
Specificity	The antibody detects endogenous levels of total MTCH2 protein.
Immunogen Type	Recombinant Protein
Immunogen Description	Fusion protein corresponding to a region derived from internal residues of human mitochondrial carrier 2
Target Name	MTCH2
Other Names	MIMP; HSPC032; SLC25A50
Accession No.	Swiss-Prot#: Q9Y6C9NCBI Gene ID: 23788Gene Accssion: BC000875/Q9Y6C9
Uniprot	Q9Y6C9
GeneID	23788;
SDS-PAGE MW	33kd
Concentration	2.7mg/ml
Formulation	Rabbit IgG in pH7.4 PBS, 0.05% NaN ₃ , 40% Glycerol.
Storage	Store at -20°C

Application Details

Western blotting: 1:1000-1:5000

Immunohistochemistry: 1:50-1:200

Images



Gel: 10%SDS-PAGE

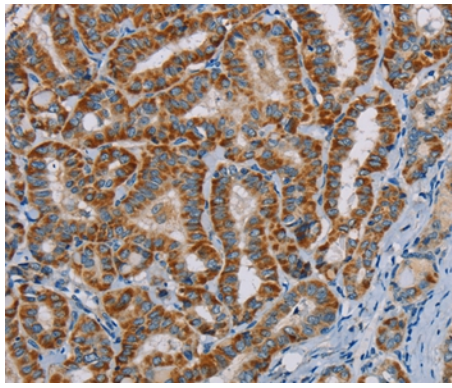
Lysates (from left to right): Human testis tissue and K562 cell,
PC3 cell and human liver cancer tissue, hela cell

Amount of lysate: 40ug per lane

Primary antibody: 1/400 dilution

Secondary antibody dilution: 1/8000

Exposure time: 40 seconds



Immunohistochemical analysis of paraffin-embedded Human thyroid cancer tissue using #36621 at dilution 1/45.

Background

Mitochondrial carrier homolog 2 (also known as MTCH2) is a protein which in humans is encoded by the MTCH2 gene. MTCH2 (mitochondrial carrier homolog 2), is a 303 amino acid multi-pass mitochondrial membrane protein that contains two solcar repeats and functions to induce mitochondrial depolarization. The substrate transported is not yet known. Induces mitochondrial depolarization.

Note: This product is for in vitro research use only