

## CMC4 Antibody

Catalog No: #36622

Orders: [order@signalwayantibody.com](mailto:order@signalwayantibody.com)Support: [tech@signalwayantibody.com](mailto:tech@signalwayantibody.com)

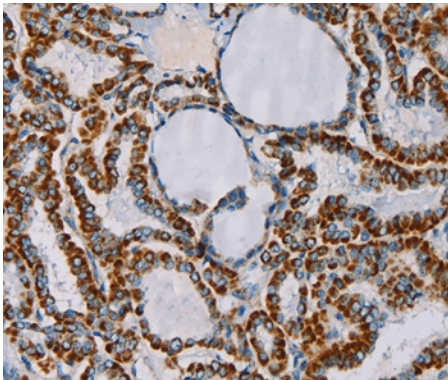
## Description

Product Name	CMC4 Antibody
Host Species	Rabbit
Clonality	Polyclonal
Purification	Antigen affinity purification.
Applications	IHC
Species Reactivity	Hu
Specificity	The antibody detects endogenous levels of total CMC4 protein.
Immunogen Type	Recombinant Protein
Immunogen Description	Full length fusion protein
Target Name	CMC4
Other Names	p8; C6.1B; MTCP1; MTCP1B; MTCP1NB; p8MTCP1
Accession No.	Swiss-Prot#: P56277NCBI Gene ID: 100272147Gene Accssion: BC002600/P56277
Uniprot	P56277
GeneID	100272147;
Concentration	3.1mg/ml
Formulation	Rabbit IgG in pH7.4 PBS, 0.05% NaN <sub>3</sub> , 40% Glycerol.
Storage	Store at -20°C

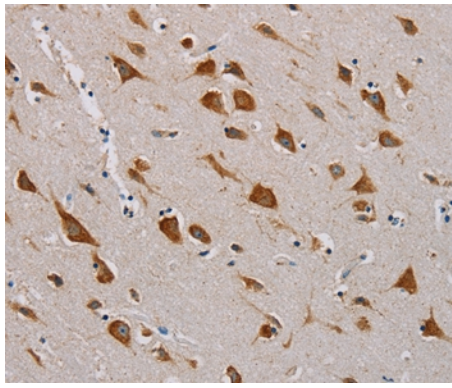
## Application Details

Immunohistochemistry: 1:100-1:300

## Images



Immunohistochemical analysis of paraffin-embedded Human thyroid cancer tissue using #36622 at dilution 1/55.



Immunohistochemical analysis of paraffin-embedded Human brain tissue using #36622 at dilution 1/55.

## Background

This gene was identified by involvement in some t(X;14) translocations associated with mature T-cell proliferations. This region has a complex gene structure, with a common promoter and 5' exon spliced to two different sets of 3' exons that encode two different proteins. This gene represents the downstream 8 kDa protein that localizes to mitochondria.

Note: This product is for in vitro research use only