

## MTF2 Antibody

Catalog No: #36623

Orders: order@signalwayantibody.com

Support: tech@signalwayantibody.com

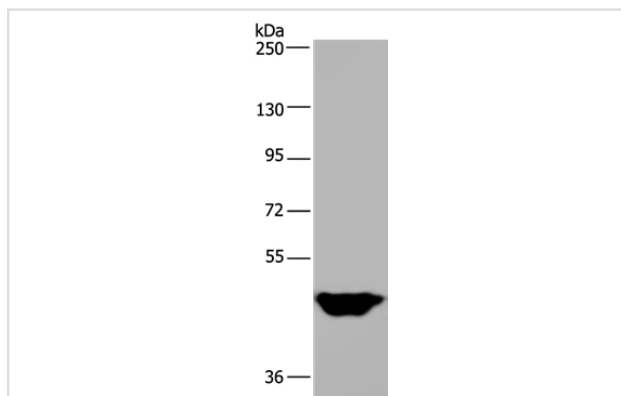
## Description

Product Name	MTF2 Antibody
Host Species	Rabbit
Clonality	Polyclonal
Purification	Antigen affinity purification.
Applications	WB
Species Reactivity	Hu
Specificity	The antibody detects endogenous levels of total MTF2 protein.
Immunogen Type	Recombinant Protein
Immunogen Description	Fusion protein corresponding to residues near the C terminal of human metal response element binding transcription factor 2
Target Name	MTF2
Other Names	M96; PCL2; TDRD19A; dJ976O13.2
Accession No.	Swiss-Prot#: Q9Y483NCBI Gene ID: 22823Gene Accssion: NP_031384
Uniprot	Q9Y483
GeneID	22823;
SDS-PAGE MW	67kd
Concentration	1.6mg/ml
Formulation	Rabbit IgG in pH7.4 PBS, 0.05% NaN <sub>3</sub> , 40% Glycerol.
Storage	Store at -20°C

## Application Details

Western blotting: 1:500-1:2000

## Images



Gel: 6%SDS-PAGE  
 Lysates (from left to right): Human testis tissue  
 Amount of lysate: 40ug per lane  
 Primary antibody: 1/400 dilution  
 Secondary antibody dilution: 1/8000  
 Exposure time: 15 seconds

## Background

MTF2(MIER2(mesoderm induction early response 1, family member 2), also known as PCL2 or M96, is a protein that in humans is encoded by the

MTF2 gene. It binds to the metal-regulating-element (MRE) of metallothionein gene promoter. May be involved in the activation of MT (metallothionein) genes in response to heavy-metal ions.

---

Note: This product is for in vitro research use only