

## MTFR1 Antibody

Catalog No: #36624

Orders: order@signalwayantibody.com

Support: tech@signalwayantibody.com

## Description

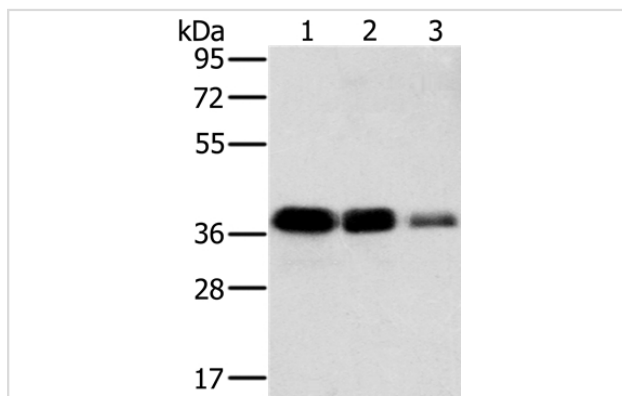
Product Name	MTFR1 Antibody
Host Species	Rabbit
Clonality	Polyclonal
Purification	Antigen affinity purification.
Applications	WB IHC
Species Reactivity	Hu
Specificity	The antibody detects endogenous levels of total MTFR1 protein.
Immunogen Type	Recombinant Protein
Immunogen Description	Fusion protein corresponding to a region derived from internal residues of human mitochondrial fission regulator 1
Target Name	MTFR1
Other Names	CHPPR; FAM54A2
Accession No.	Swiss-Prot#: Q15390NCBI Gene ID: 9650Gene Accssion: BC043498/Q15390
Uniprot	Q15390
GeneID	9650;
SDS-PAGE MW	37kd
Concentration	2mg/ml
Formulation	Rabbit IgG in pH7.4 PBS, 0.05% NaN <sub>3</sub> , 40% Glycerol.
Storage	Store at -20°C

## Application Details

Western blotting: 1:500-1:2000

Immunohistochemistry: 1:50-1:200

## Images



Gel: 8%SDS-PAGE

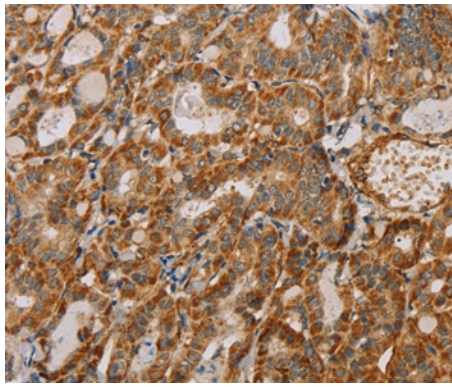
Lysates (from left to right): A549, HT-29 and A172 cell

Amount of lysate: 40ug per lane

Primary antibody: 1/500 dilution

Secondary antibody dilution: 1/8000

Exposure time: 5 seconds



Immunohistochemical analysis of paraffin-embedded Human thyroid cancer tissue using #36624 at dilution 1/40.

## Background

This gene encodes a mitochondrial protein that is characterized by a poly-proline rich region. A chicken homolog of this protein promotes mitochondrial fission and the mouse homolog protects cells from oxidative stress. A related pseudogene of this gene is found on chromosome X.?

Note: This product is for in vitro research use only