

## MFTP1 Antibody

Catalog No: #36625

Orders: order@signalwayantibody.com

Support: tech@signalwayantibody.com

## Description

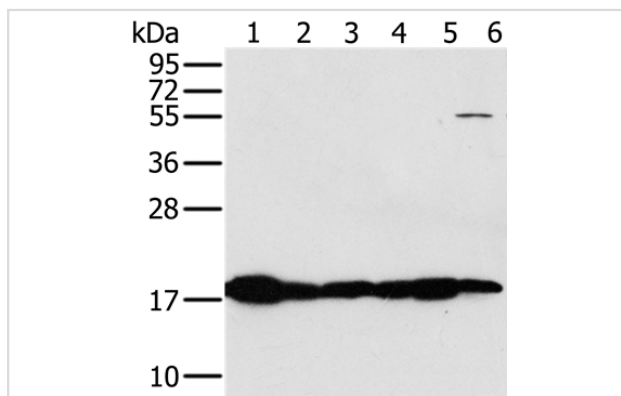
Product Name	MFTP1 Antibody
Host Species	Rabbit
Clonality	Polyclonal
Purification	Antigen affinity purification.
Applications	WB IHC
Species Reactivity	Hu Ms
Specificity	The antibody detects endogenous levels of total MFTP1 protein.
Immunogen Type	Recombinant Protein
Immunogen Description	Fusion protein corresponding to a region derived from internal residues of human mitochondrial fission process 1
Target Name	MFTP1
Other Names	MTP18; HSPC242
Accession No.	Swiss-Prot#: Q9UDX5 NCBI Gene ID: 51537 Gene Accession: BC046132/Q9UDX5
Uniprot	Q9UDX5
GeneID	51537;
SDS-PAGE MW	18kd
Concentration	1.8mg/ml
Formulation	Rabbit IgG in pH7.4 PBS, 0.05% NaN <sub>3</sub> , 40% Glycerol.
Storage	Store at -20°C

## Application Details

Western blotting: 1:500-1:2000

Immunohistochemistry: 1:50-1:200

## Images



Gel: 10%SDS-PAGE

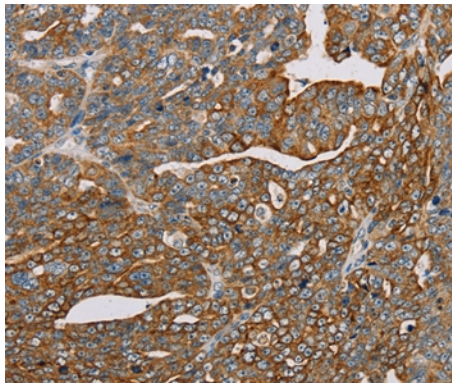
Lysates (from left to right): Mouse heart and muscle tissue, hela cell and mouse liver tissue, mouse kidney tissue and hepg2 cell

Amount of lysate: 40ug per lane

Primary antibody: 1/450 dilution

Secondary antibody dilution: 1/8000

Exposure time: 5 seconds



Immunohistochemical analysis of paraffin-embedded Human cervical cancer tissue using #36625 at dilution 1/30.

## Background

MTP18 (mitochondrial 18 kDa protein), also known as HSPC242, is a 166 amino acid protein essential for cell viability. MTP18 may also have a role in maintaining the integrity of the mitochondrial network. Localized to the mitochondrion, expression of MTP18 is regulated by the PI 3-kinase pathway. Loss of function of MTP18 results in the release of cytochrome c, which subsequently activates the caspase cascade and leads to apoptosis.

Note: This product is for in vitro research use only