

## NAT10 Antibody

Catalog No: #36631

Orders: order@signalwayantibody.com

Support: tech@signalwayantibody.com

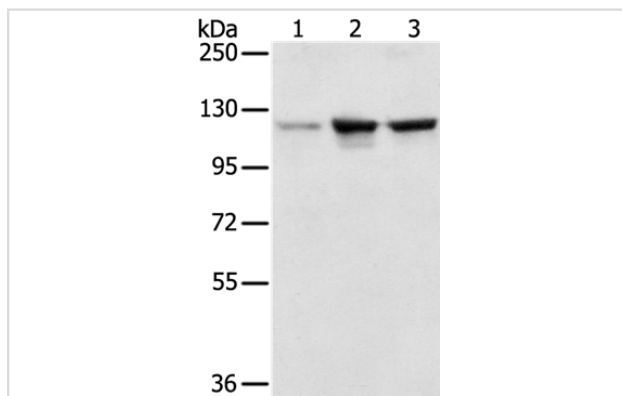
## Description

Product Name	NAT10 Antibody
Host Species	Rabbit
Clonality	Polyclonal
Purification	Antigen affinity purification.
Applications	WB
Species Reactivity	Hu
Specificity	The antibody detects endogenous levels of total NAT10 protein.
Immunogen Type	Recombinant Protein
Immunogen Description	Fusion protein corresponding to a region derived from internal residues of human N-acetyltransferase 10 (GCN5-related)
Target Name	NAT10
Other Names	ALP; NET43
Accession No.	Swiss-Prot#: Q9H0A0NCBI Gene ID: 55226Gene Accssion: BC035558/Q9H0A0
Uniprot	Q9H0A0
GeneID	55226;
SDS-PAGE MW	116kd
Concentration	1.8mg/ml
Formulation	Rabbit IgG in pH7.4 PBS, 0.05% NaN <sub>3</sub> , 40% Glycerol.
Storage	Store at -20°C

## Application Details

Western blotting: 1:500-1:2000

## Images



Gel: 6%SDS-PAGE  
 Lysates (from left to right): A549, K562 and hela cell  
 Amount of lysate: 50ug per lane  
 Primary antibody: 1/200 dilution  
 Secondary antibody dilution: 1/8000  
 Exposure time: 10 seconds

## Background

NAT-10 (N-acetyltransferase 10) is a nuclear protein that belongs to the UPF0202 family. It has a single N-acetyltransferase domain that likely

functions as a histone acetyltransferase. NAT10 functions primarily to regulate the activity of telomerase. It is upregulated in response to DNA damage and is likely to take part in genotoxic resistance and DNA repair. NAT-10 has a high binding potential for the promoter region of TERT which stimulates the production of telomerase. These varieties of function imply that human telomerase complexes have multiple functions rather than specific duties.

---

Note: This product is for in vitro research use only