

NPM3 Antibody

Catalog No: #36658

Orders: order@signalwayantibody.com

Support: tech@signalwayantibody.com

Description

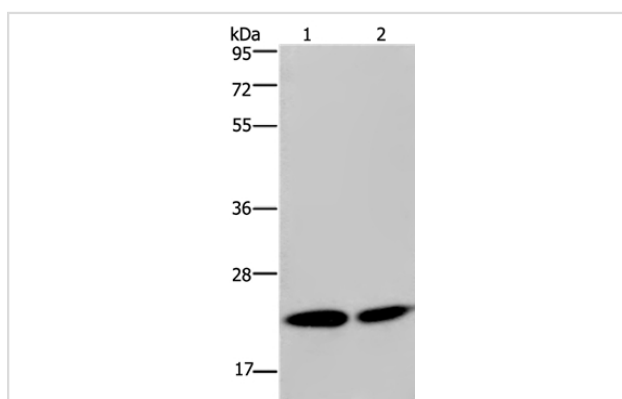
Product Name	NPM3 Antibody
Host Species	Rabbit
Clonality	Polyclonal
Purification	Antigen affinity purification.
Applications	WB IHC
Species Reactivity	Hu
Specificity	The antibody detects endogenous levels of total NPM3 protein.
Immunogen Type	Recombinant Protein
Immunogen Description	Fusion protein corresponding to a region derived from internal residues of human nucleophosmin/nucleoplasmin 3
Target Name	NPM3
Other Names	PORMIN; TMEM123
Accession No.	Swiss-Prot#: O75607NCBI Gene ID: 10360Gene Accssion: BC054868/O75607
Uniprot	O75607
GeneID	10360;
SDS-PAGE MW	19kd
Concentration	2.8mg/ml
Formulation	Rabbit IgG in pH7.4 PBS, 0.05% NaN ₃ , 40% Glycerol.
Storage	Store at -20°C

Application Details

Western blotting: 1:500-1:2000

Immunohistochemistry: 1:100-1:300

Images



Gel: 8%SDS-PAGE

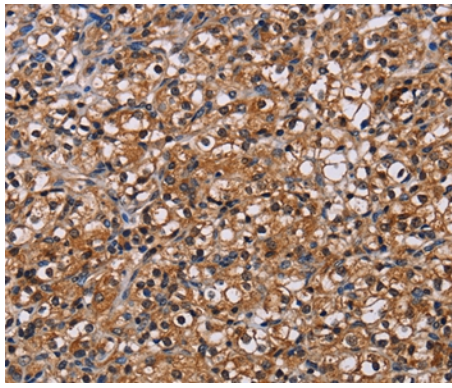
Lysates (from left to right): HeLa and Jurkat cell

Amount of lysate: 40ug per lane

Primary antibody: 1/300 dilution

Secondary antibody dilution: 1/8000

Exposure time: 10 seconds



Immunohistochemical analysis of paraffin-embedded Human prostate cancer tissue using #36658 at dilution 1/60.

Background

The protein encoded by this gene is related to the nuclear chaperone phosphoproteins, nucleoplasmin and nucleophosmin. This protein is strongly expressed in diverse cell types where it localizes primarily to the nucleus. Based on its similarity to nucleoplasmin and nucleophosmin, this protein likely functions as a molecular chaperone in the cell nucleus.

Note: This product is for in vitro research use only