

NR1D1 Antibody

Catalog No: #36659

Orders: order@signalwayantibody.comSupport: tech@signalwayantibody.com

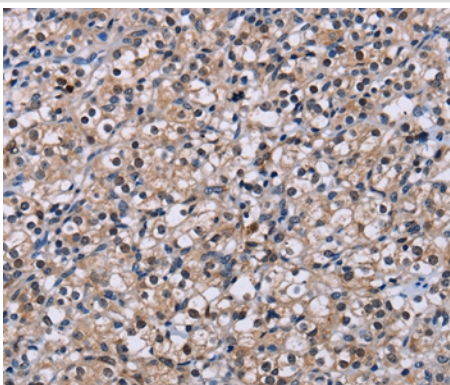
Description

Product Name	NR1D1 Antibody
Host Species	Rabbit
Clonality	Polyclonal
Purification	Antigen affinity purification.
Applications	IHC
Species Reactivity	Hu
Specificity	The antibody detects endogenous levels of total NR1D1 protein.
Immunogen Type	Recombinant Protein
Immunogen Description	Fusion protein corresponding to residues near the N terminal of human nuclear receptor subfamily 1, group D, member 1
Target Name	NR1D1
Other Names	EAR1; hRev; THRA1; THRAL; ear-1
Accession No.	Swiss-Prot#: P20393NCBI Gene ID: 9572Gene Accssion: BC047875/P20393
Uniprot	P20393
GeneID	9572;
Concentration	2.5mg/ml
Formulation	Rabbit IgG in pH7.4 PBS, 0.05% NaN ₃ , 40% Glycerol.
Storage	Store at -20°C

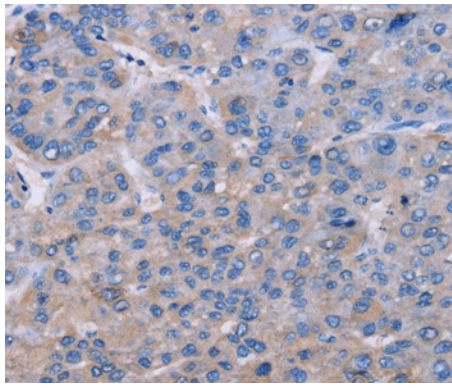
Application Details

Immunohistochemistry: 1:50-1:200

Images



Immunohistochemical analysis of paraffin-embedded Human prostate cancer tissue using #36659 at dilution 1/60.



Immunohistochemical analysis of paraffin-embedded Human liver cancer tissue using #36659 at dilution 1/60.

Background

This gene encodes a transcription factor that is a member of the nuclear receptor subfamily 1. The encoded protein is a ligand-sensitive transcription factor that negatively regulates the expression of core clock proteins. In particular this protein represses the circadian clock transcription factor aryl hydrocarbon receptor nuclear translocator-like protein 1 (ARNTL). This protein may also be involved in regulating genes that function in metabolic, inflammatory and cardiovascular processes.?

Note: This product is for in vitro research use only