

OTUB1 Antibody

Catalog No: #36672

Orders: order@signalwayantibody.comSupport: tech@signalwayantibody.com

Description

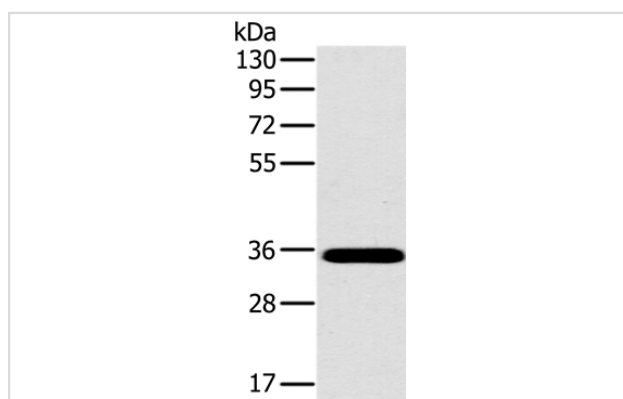
Product Name	OTUB1 Antibody
Host Species	Rabbit
Clonality	Polyclonal
Purification	Antigen affinity purification.
Applications	WB IHC
Species Reactivity	Hu Ms
Specificity	The antibody detects endogenous levels of total OTUB1 protein.
Immunogen Type	Recombinant Protein
Immunogen Description	Fusion protein corresponding to a region derived from internal residues of human OTU deubiquitinase, ubiquitin aldehyde binding 1
Target Name	OTUB1
Other Names	OTB1; OTU1; HSPC263
Accession No.	Swiss-Prot#: Q96FW1NCBI Gene ID: 55611Gene Accssion: BC007519/Q96FW1
Uniprot	Q96FW1
GeneID	55611;
SDS-PAGE MW	31kd
Concentration	2.4mg/ml
Formulation	Rabbit IgG in pH7.4 PBS, 0.05% NaN ₃ , 40% Glycerol.
Storage	Store at -20°C

Application Details

Western blotting: 1:1000-1:5000

Immunohistochemistry: 1:50-1:200

Images



Gel: 8%SDS-PAGE

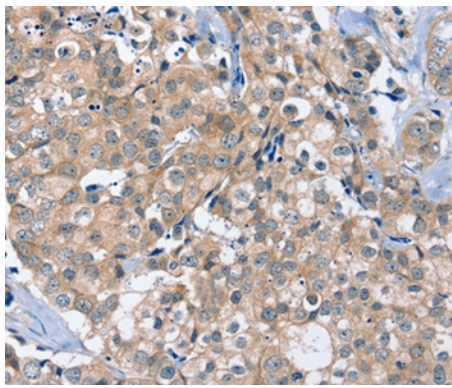
Lysates (from left to right): Mouse brain tissue

Amount of lysate: 40ug per lane

Primary antibody: 1/800 dilution

Secondary antibody dilution: 1/8000

Exposure time: 20 seconds



Immunohistochemical analysis of paraffin-embedded Human breast cancer tissue using #36672 at dilution 1/40.

Background

The product of this gene is a member of the OTU (ovarian tumor) superfamily of predicted cysteine proteases. The encoded protein is a highly specific ubiquitin iso-peptidase, and cleaves ubiquitin from branched poly-ubiquitin chains but not from ubiquitinated substrates. It interacts with another ubiquitin protease and an E3 ubiquitin ligase that inhibits cytokine gene transcription in the immune system. It is proposed to function in specific ubiquitin-dependent pathways, possibly by providing an editing function for polyubiquitin chain growth.?

Note: This product is for in vitro research use only