

PARP11 Antibody

Catalog No: #36683

Orders: order@signalwayantibody.comSupport: tech@signalwayantibody.com

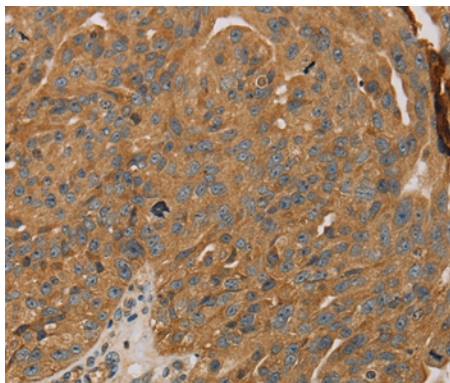
Description

Product Name	PARP11 Antibody
Host Species	Rabbit
Clonality	Polyclonal
Purification	Antigen affinity purification.
Applications	IHC
Species Reactivity	Hu
Specificity	The antibody detects endogenous levels of total PARP11 protein.
Immunogen Type	Recombinant Protein
Immunogen Description	Full length fusion protein
Target Name	PARP11
Other Names	ARTD11; MIB006; C12orf6
Accession No.	Swiss-Prot#: Q9NR21NCBI Gene ID: 57097Gene Accssion: BC017569/Q9NR21
Uniprot	Q9NR21
GeneID	57097;
Concentration	1.7mg/ml
Formulation	Rabbit IgG in pH7.4 PBS, 0.05% NaN ₃ , 40% Glycerol.
Storage	Store at -20°C

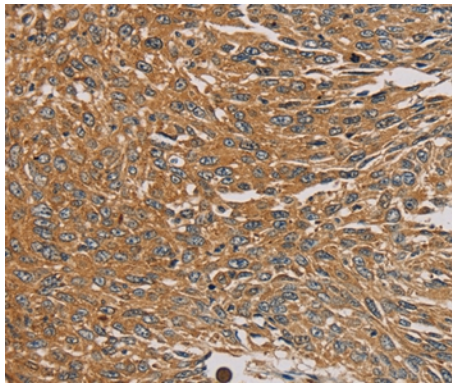
Application Details

Immunohistochemistry: 1:50-1:200

Images



Immunohistochemical analysis of paraffin-embedded Human breast cancer tissue using #36683 at dilution 1/30.



Immunohistochemical analysis of paraffin-embedded Human liver cancer tissue using #36683 at dilution 1/30.

Background

Poly(ADP-ribosylation) is a method of DNA damage-dependent posttranslational modification that helps to rescue injured proliferating cells from cell death. The PARP (poly(ADP-ribose) polymerase) proteins comprise a superfamily of enzymes that functionally modify histones and other nuclear proteins, thereby preventing cell death. PARPs use NAD⁺ as a substrate to catalytically transfer ADP-ribose residues onto protein acceptors; a process that, when repeated multiple times, leads to the formation of poly(ADPribose) chains on the protein.?

Note: This product is for in vitro research use only