

## PDLIM2 Antibody

Catalog No: #36687

Orders: [order@signalwayantibody.com](mailto:order@signalwayantibody.com)Support: [tech@signalwayantibody.com](mailto:tech@signalwayantibody.com)

## Description

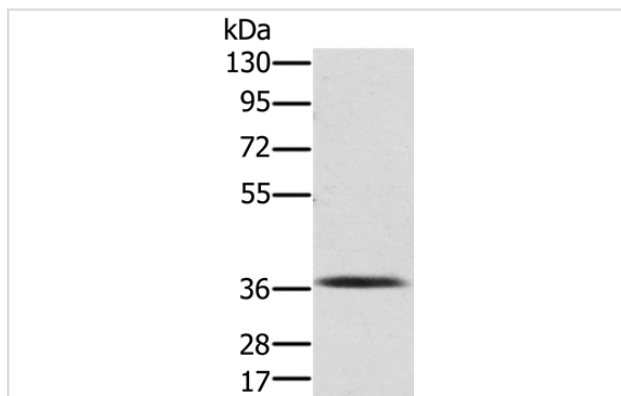
Product Name	PDLIM2 Antibody
Host Species	Rabbit
Clonality	Polyclonal
Purification	Antigen affinity purification.
Applications	WB IHC
Species Reactivity	Hu Ms
Specificity	The antibody detects endogenous levels of total PDLIM2 protein.
Immunogen Type	Recombinant Protein
Immunogen Description	Fusion protein corresponding to residues near the N terminal of human PDZ and LIM domain 2 (mystique)
Target Name	PDLIM2
Other Names	SLIM; MYSTIQUE
Accession No.	Swiss-Prot#: Q96JY6NCBI Gene ID: 64236Gene Accsson: BC021556/Q96JY6
Uniprot	Q96JY6
GeneID	64236;
SDS-PAGE MW	37kd
Concentration	1.1mg/ml
Formulation	Rabbit IgG in pH7.4 PBS, 0.05% NaN <sub>3</sub> , 40% Glycerol.
Storage	Store at -20°C

## Application Details

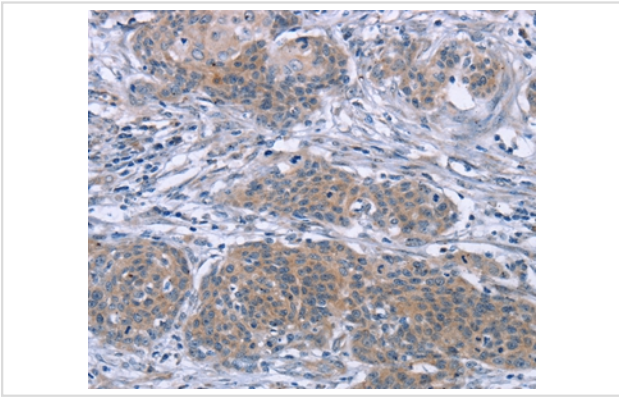
Western blotting: 1:200-1:1000

Immunohistochemistry: 1:15-1:50

## Images



Gel: 8%SDS-PAGE  
Lysates (from left to right): Mouse liver tissue  
Amount of lysate: 40ug per lane  
Primary antibody: 1/250 dilution  
Secondary antibody dilution: 1/8000  
Exposure time: 3 minutes



Immunohistochemical analysis of paraffin-embedded Human cervical cancer tissue using #36687 at dilution 1/20.

## Background

This gene encodes a member of the ALP subfamily of PDZ-LIM domain proteins. The encoded protein suppresses anchorage-dependent growth and promotes cell migration and adhesion through interactions with the actin cytoskeleton via the PDZ domain. The encoded protein is also a putative tumor suppressor protein, and decreased expression of this gene is associated with several malignancies including breast cancer and adult T-cell leukemia. Alternatively spliced transcript variants encoding multiple isoforms have been observed for this gene.

Note: This product is for in vitro research use only