

## PEA15 Antibody

Catalog No: #36689

Orders: [order@signalwayantibody.com](mailto:order@signalwayantibody.com)Support: [tech@signalwayantibody.com](mailto:tech@signalwayantibody.com)

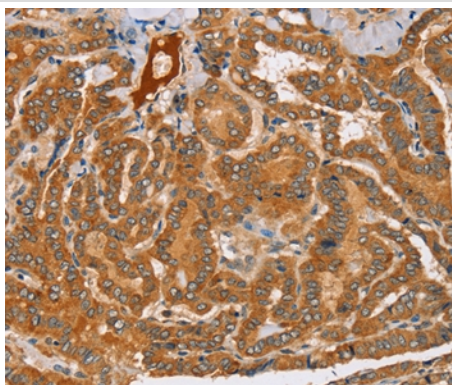
## Description

Product Name	PEA15 Antibody
Host Species	Rabbit
Clonality	Polyclonal
Purification	Antigen affinity purification.
Applications	IHC
Species Reactivity	Hu Rt
Specificity	The antibody detects endogenous levels of total PEA15 protein.
Immunogen Type	Recombinant Protein
Immunogen Description	Full length fusion protein
Target Name	PEA15
Other Names	PED; MAT1; HMAT1; MAT1H; PEA-15; HUMMAT1H
Accession No.	Swiss-Prot#: Q15121NCBI Gene ID: 8682Gene Accssion: BC002426/Q15121
Uniprot	Q15121
GeneID	8682;
Concentration	1.4mg/ml
Formulation	Rabbit IgG in pH7.4 PBS, 0.05% NaN <sub>3</sub> , 40% Glycerol.
Storage	Store at -20°C

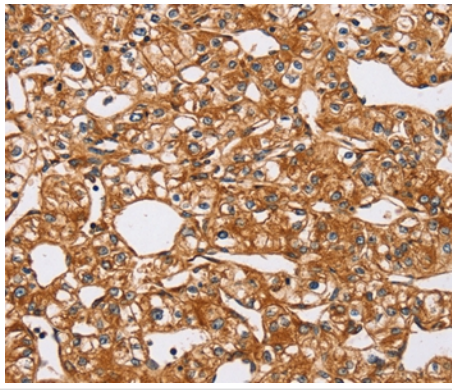
## Application Details

Immunohistochemistry: 1:50-1:200

## Images



Immunohistochemical analysis of paraffin-embedded Human thyroid cancer tissue using #36689 at dilution 1/25.



Immunohistochemical analysis of paraffin-embedded Human prostate cancer tissue using #36689 at dilution 1/25.

## Background

This gene encodes a death effector domain-containing protein that functions as a negative regulator of apoptosis. The encoded protein is an endogenous substrate for protein kinase C. This protein is also overexpressed in type 2 diabetes mellitus, where it may contribute to insulin resistance in glucose uptake. Alternative splicing results in multiple transcript variants.

Note: This product is for in vitro research use only