

PMPCB Antibody

Catalog No: #36698

Orders: order@signalwayantibody.comSupport: tech@signalwayantibody.com

Description

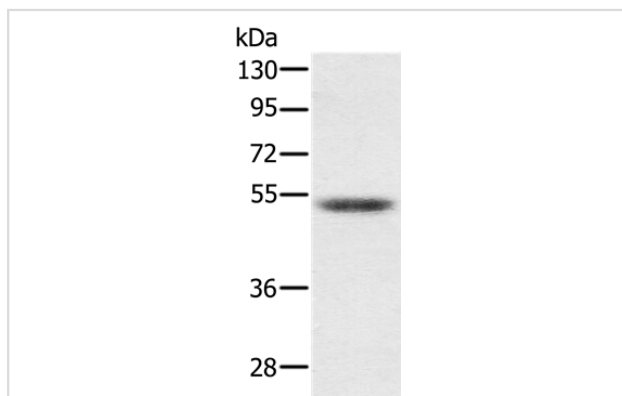
Product Name	PMPCB Antibody
Host Species	Rabbit
Clonality	Polyclonal
Purification	Antigen affinity purification.
Applications	WB IHC
Species Reactivity	Hu
Specificity	The antibody detects endogenous levels of total PMPCB protein.
Immunogen Type	Recombinant Protein
Immunogen Description	Fusion protein corresponding to residues near the C terminal of human peptidase (mitochondrial processing) beta
Target Name	PMPCB
Other Names	MPPB; P-52; MPP11; MPPP52; Beta-MPP
Accession No.	Swiss-Prot#: O75439NCBI Gene ID: 9512Gene Accssion: BC014079/O75439
Uniprot	O75439
GeneID	9512;
SDS-PAGE MW	54kd
Concentration	1.3mg/ml
Formulation	Rabbit IgG in pH7.4 PBS, 0.05% NaN ₃ , 40% Glycerol.
Storage	Store at -20°C

Application Details

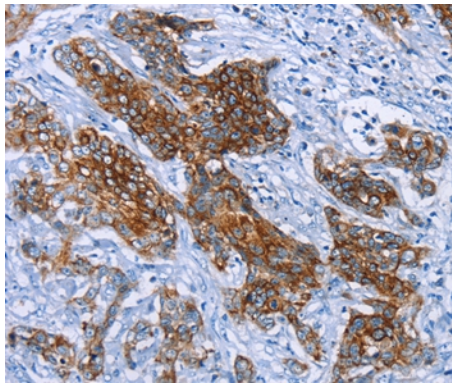
Western blotting: 1:200-1:1000

Immunohistochemistry: 1:25-1:100

Images



Gel: 8%SDS-PAGE
 Lysate: 40ug Hepg2 cell
 Primary antibody: 1/300 dilution
 Secondary antibody dilution: 1/8000
 Exposure time: 5 seconds



Immunohistochemical analysis of paraffin-embedded Human cervical cancer tissue using #36698 at dilution 1/25.

Background

This gene is a member of the peptidase M16 family and encodes a protein with a zinc-binding motif. This protein is located in the mitochondrial matrix and catalyzes the cleavage of the leader peptides of precursor proteins newly imported into the mitochondria, though it only functions as part of a heterodimeric complex.?

Note: This product is for in vitro research use only