

PPP2CA Antibody

Catalog No: #36699

Orders: order@signalwayantibody.com

Support: tech@signalwayantibody.com

Description

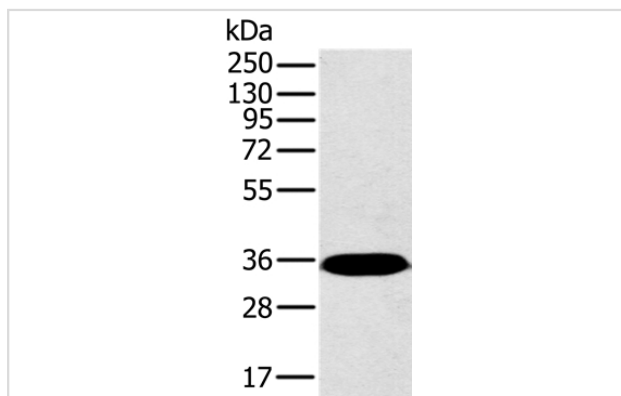
Product Name	PPP2CA Antibody
Host Species	Rabbit
Clonality	Polyclonal
Purification	Antigen affinity purification.
Applications	WB IHC
Species Reactivity	Hu Ms
Specificity	The antibody detects endogenous levels of total PPP2CA protein.
Immunogen Type	Recombinant Protein
Immunogen Description	Fusion protein corresponding to residues near the N terminal of human protein phosphatase 2, catalytic subunit, alpha isozyme
Target Name	PPP2CA
Other Names	RP-C; PP2Ac; PP2CA; PP2Calpha
Accession No.	Swiss-Prot#: P67775NCBI Gene ID: 5515Gene Accssion: BC002657/P67775
Uniprot	P67775
GeneID	5515;
SDS-PAGE MW	36kd
Concentration	1.9mg/ml
Formulation	Rabbit IgG in pH7.4 PBS, 0.05% NaN ₃ , 40% Glycerol.
Storage	Store at -20°C

Application Details

Western blotting: 1:1000-1:5000

Immunohistochemistry: 1:25-1:100

Images



Gel: 10%SDS-PAGE

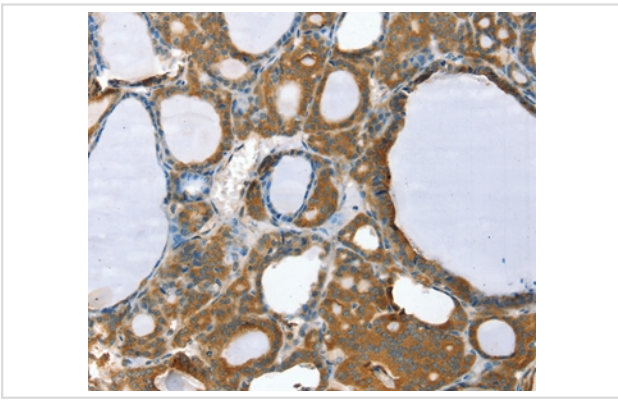
Lysates (from left to right): Mouse brain tissue

Amount of lysate: 40ug per lane

Primary antibody: 1/450 dilution

Secondary antibody dilution: 1/8000

Exposure time: 20 seconds



Immunohistochemical analysis of paraffin-embedded Human thyroid cancer tissue using #36699 at dilution 1/35.

Background

This gene encodes the phosphatase 2A catalytic subunit. Protein phosphatase 2A is one of the four major Ser/Thr phosphatases, and it is implicated in the negative control of cell growth and division. It consists of a common heteromeric core enzyme, which is composed of a catalytic subunit and a constant regulatory subunit, that associates with a variety of regulatory subunits. This gene encodes an alpha isoform of the catalytic subunit.

Note: This product is for in vitro research use only