

PDP1 Antibody

Catalog No: #36700

Orders: order@signalwayantibody.com

Support: tech@signalwayantibody.com

Description

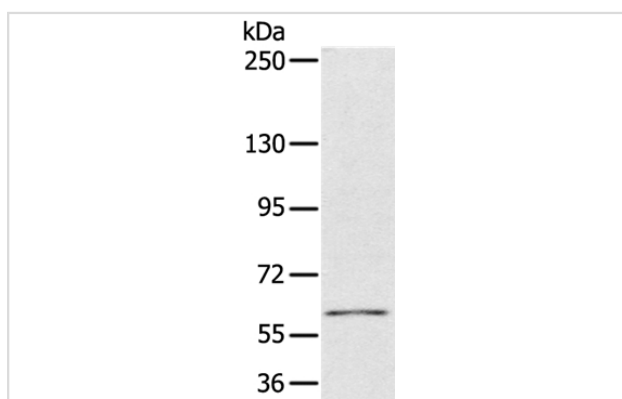
Product Name	PDP1 Antibody
Host Species	Rabbit
Clonality	Polyclonal
Purification	Antigen affinity purification.
Applications	WB IHC
Species Reactivity	Hu
Specificity	The antibody detects endogenous levels of total PDP1 protein.
Immunogen Type	Recombinant Protein
Immunogen Description	Fusion protein corresponding to residues near the C terminal of human pyruvate dehydrogenase phosphatase catalytic subunit 1
Target Name	PDP1
Other Names	PDH; PDP; PDPC; PPM2C
Accession No.	Swiss-Prot#: Q9P0J1NCBI Gene ID: 54704Gene Accssion: BC047619/Q9P0J1
Uniprot	Q9P0J1
GeneID	54704;
SDS-PAGE MW	61kd
Concentration	1.3mg/ml
Formulation	Rabbit IgG in pH7.4 PBS, 0.05% NaN ₃ , 40% Glycerol.
Storage	Store at -20°C

Application Details

Western blotting: 1:200-1:1000

Immunohistochemistry: 1:25-1:100

Images



Gel: 6%SDS-PAGE

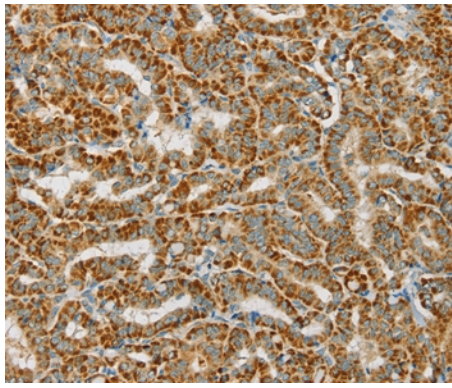
Lysates (from left to right): Human bladder carcinoma tissue

Amount of lysate: 40ug per lane

Primary antibody: 1/300 dilution

Secondary antibody dilution: 1/8000

Exposure time: 40 seconds



Immunohistochemical analysis of paraffin-embedded Human thyroid cancer tissue using #36700 at dilution 1/25.

Background

Pyruvate dehydrogenase (E1) is one of the three components (E1, E2, and E3) of the large pyruvate dehydrogenase complex. Pyruvate dehydrogenase kinases catalyze phosphorylation of serine residues of E1 to inactivate the E1 component and inhibit the complex. Pyruvate dehydrogenase phosphatases catalyze the dephosphorylation and activation of the E1 component to reverse the effects of pyruvate dehydrogenase kinases. Pyruvate dehydrogenase phosphatase is a heterodimer consisting of catalytic and regulatory subunits.?

Note: This product is for in vitro research use only