

PRC1 Antibody

Catalog No: #36701

Orders: order@signalwayantibody.comSupport: tech@signalwayantibody.com

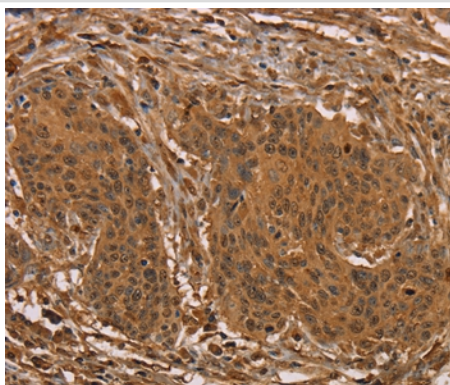
Description

Product Name	PRC1 Antibody
Host Species	Rabbit
Clonality	Polyclonal
Purification	Antigen affinity purification.
Applications	IHC
Species Reactivity	Hu
Specificity	The antibody detects endogenous levels of total PRC1 protein.
Immunogen Type	Recombinant Protein
Immunogen Description	Fusion protein corresponding to a region derived from internal residues of human protein regulator of cytokinesis 1
Target Name	PRC1
Other Names	ASE1
Accession No.	Swiss-Prot#: O43663NCBI Gene ID: 9055Gene Accssion: BC003138/O43663
Uniprot	O43663
GeneID	9055;
Concentration	1.5mg/ml
Formulation	Rabbit IgG in pH7.4 PBS, 0.05% NaN ₃ , 40% Glycerol.
Storage	Store at -20°C

Application Details

Immunohistochemistry: 1:50-1:200

Images



Immunohistochemical analysis of paraffin-embedded Human cervical cancer tissue using #36701 at dilution 1/25.

Background

This gene encodes a protein that is involved in cytokinesis. The protein is present at high levels during the S and G₂/M phases of mitosis but its levels drop dramatically when the cell exits mitosis and enters the G₁ phase. It is located in the nucleus during interphase, becomes associated with mitotic

spindles in a highly dynamic manner during mitosis, and localizes to the cell mid-body during cytokinesis. This protein has been shown to be a substrate of several cyclin-dependent kinases (CDKs). It is necessary for polarizing parallel microtubules and concentrating the factors responsible for contractile ring assembly.

Note: This product is for in vitro research use only