

PRR5 Antibody

Catalog No: #36702

Orders: order@signalwayantibody.comSupport: tech@signalwayantibody.com

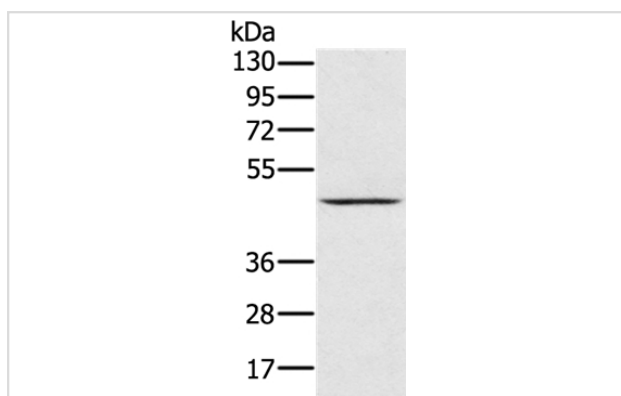
Description

Product Name	PRR5 Antibody
Host Species	Rabbit
Clonality	Polyclonal
Purification	Antigen affinity purification.
Applications	WB
Species Reactivity	Hu
Specificity	The antibody detects endogenous levels of total PRR5 protein.
Immunogen Type	Recombinant Protein
Immunogen Description	Full length fusion protein
Target Name	PRR5
Other Names	PP610; PROTOR1; PROTOR-1; FLJ20185k
Accession No.	Swiss-Prot#: P85299NCBI Gene ID: 55615Gene Accssion: BC016921/P85299
Uniprot	P85299
GeneID	55615;
SDS-PAGE MW	43kd
Concentration	1mg/ml
Formulation	Rabbit IgG in pH7.4 PBS, 0.05% NaN ₃ , 40% Glycerol.
Storage	Store at -20°C

Application Details

Western blotting: 1:500-1:2000

Images



Gel: 8%SDS-PAGE

Lysates (from left to right): Human normal kidney tissue

Amount of lysate: 40ug per lane

Primary antibody: 1/300 dilution

Secondary antibody dilution: 1/8000

Exposure time: 5 minutes

Background

This gene encodes a protein with a proline-rich domain. This gene is located in a region of chromosome 22 reported to contain a tumor suppressor gene that may be involved in breast and colorectal tumorigenesis. The protein is a component of the mammalian target of rapamycin complex 2

(mTORC2), and it regulates platelet-derived growth factor (PDGF) receptor beta expression and PDGF signaling to Akt and S6K1. Alternative splicing and the use of alternative promoters results in transcripts encoding different isoforms.

Note: This product is for in vitro research use only