

PSMC1 Antibody

Catalog No: #36704

Orders: order@signalwayantibody.com

Support: tech@signalwayantibody.com

Description

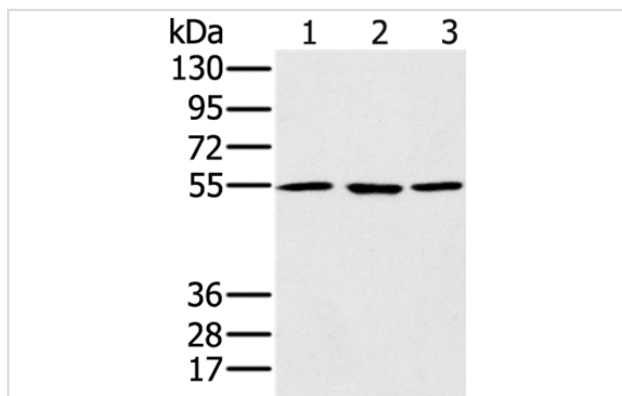
Product Name	PSMC1 Antibody
Host Species	Rabbit
Clonality	Polyclonal
Purification	Antigen affinity purification.
Applications	WB IHC
Species Reactivity	Hu Ms Rt
Specificity	The antibody detects endogenous levels of total PSMC1 protein.
Immunogen Type	Recombinant Protein
Immunogen Description	Fusion protein corresponding to residues near the C terminal of human proteasome (prosome, macropain) 26S subunit, ATPase, 1
Target Name	PSMC1
Other Names	S4; p56; P26S4
Accession No.	Swiss-Prot#: P62191NCBI Gene ID: 5700Gene Accssion: BC016368/P62191
Uniprot	P62191
GeneID	5700;
SDS-PAGE MW	49kd
Concentration	2.2mg/ml
Formulation	Rabbit IgG in pH7.4 PBS, 0.05% NaN ₃ , 40% Glycerol.
Storage	Store at -20°C

Application Details

Western blotting: 1:500-1:2000

Immunohistochemistry: 1:50-1:200

Images



Gel: 8%SDS-PAGE

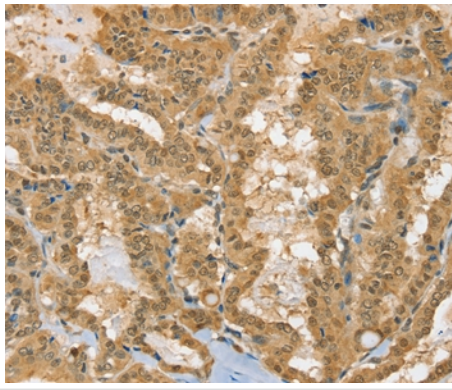
Lysates (from left to right): A549, hela and NIH/3T3 cell

Amount of lysate: 40ug per lane

Primary antibody: 1/500 dilution

Secondary antibody dilution: 1/8000

Exposure time: 20 seconds



Immunohistochemical analysis of paraffin-embedded Human thyroid cancer tissue using #36704 at dilution 1/40.

Background

The 26S proteasome is a multicatalytic proteinase complex with a highly ordered structure composed of 2 complexes, a 20S core and a 19S regulator. The 20S core is composed of 4 rings of 28 non-identical subunits; 2 rings are composed of 7 alpha subunits and 2 rings are composed of 7 beta subunits. The 19S regulator is composed of a base, which contains 6 ATPase subunits and 2 non-ATPase subunits, and a lid, which contains up to 10 non-ATPase subunits.?

Note: This product is for in vitro research use only