

Description

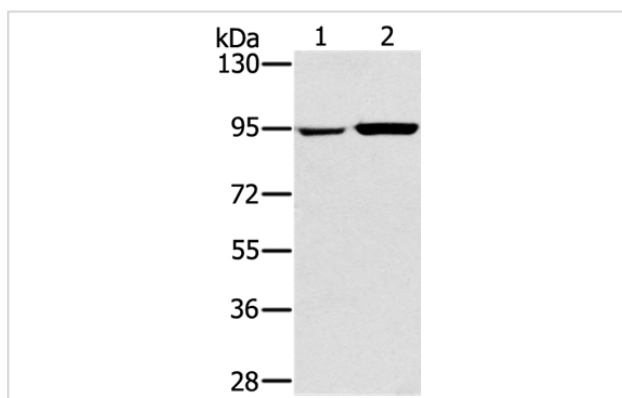
Product Name	PYGL Antibody
Host Species	Rabbit
Clonality	Polyclonal
Purification	Antigen affinity purification.
Applications	WB IHC
Species Reactivity	Hu
Specificity	The antibody detects endogenous levels of total PYGL protein.
Immunogen Type	Recombinant Protein
Immunogen Description	Fusion protein corresponding to residues near the C terminal of human phosphorylase, glycogen, liver
Target Name	PYGL
Other Names	GSD6
Accession No.	Swiss-Prot#: P06737NCBI Gene ID: 5836Gene Accssion: BC082229/P06737
Uniprot	P06737
GeneID	5836;
SDS-PAGE MW	97kd
Concentration	2mg/ml
Formulation	Rabbit IgG in pH7.4 PBS, 0.05% NaN ₃ , 40% Glycerol.
Storage	Store at -20°C

Application Details

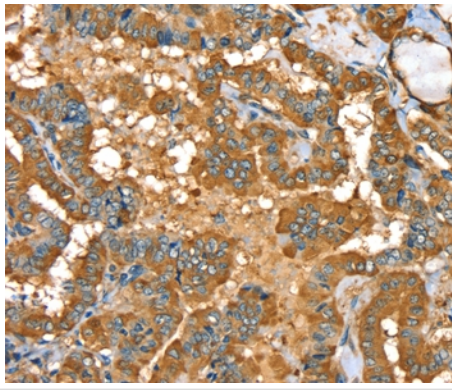
Western blotting: 1:500-1:2000

Immunohistochemistry: 1:30-1:150

Images



Gel: 6%SDS-PAGE
 Lysates (from left to right): 231 and PC3 cell
 Amount of lysate: 40ug per lane
 Primary antibody: 1/400 dilution
 Secondary antibody dilution: 1/8000
 Exposure time: 20 seconds



Immunohistochemical analysis of paraffin-embedded Human thyroid cancer tissue using #36709 at dilution 1/35.

Background

This gene encodes a homodimeric protein that catalyses the cleavage of alpha-1,4-glycosidic bonds to release glucose-1-phosphate from liver glycogen stores. This protein switches from inactive phosphorylase B to active phosphorylase A by phosphorylation of serine residue 15. Activity of this enzyme is further regulated by multiple allosteric effectors and hormonal controls. Humans have three glycogen phosphorylase genes that encode distinct isozymes that are primarily expressed in liver, brain and muscle, respectively.?

Note: This product is for in vitro research use only