

## PYGM Antibody

Catalog No: #36710

Orders: order@signalwayantibody.com

Support: tech@signalwayantibody.com

## Description

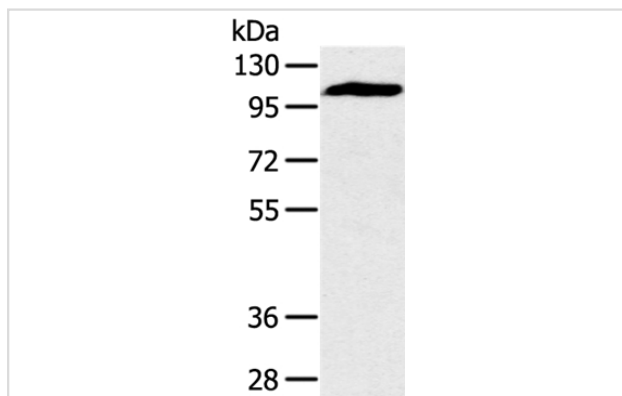
Product Name	PYGM Antibody
Host Species	Rabbit
Clonality	Polyclonal
Purification	Antigen affinity purification.
Applications	WB IHC
Species Reactivity	Hu Ms
Specificity	The antibody detects endogenous levels of total PYGM protein.
Immunogen Type	Recombinant Protein
Immunogen Description	Fusion protein corresponding to residues near the C terminal of human phosphorylase, glycogen, muscle
Target Name	PYGM
Other Names	Myophosphorylase; phosphorylase; glycogen;muscle
Accession No.	Swiss-Prot#: P11217NCBI Gene ID: 5837Gene Accssion: BC126392/P11217
Uniprot	P11217
GeneID	5837;
SDS-PAGE MW	97kd
Concentration	1.6mg/ml
Formulation	Rabbit IgG in pH7.4 PBS, 0.05% NaN <sub>3</sub> , 40% Glycerol.
Storage	Store at -20°C

## Application Details

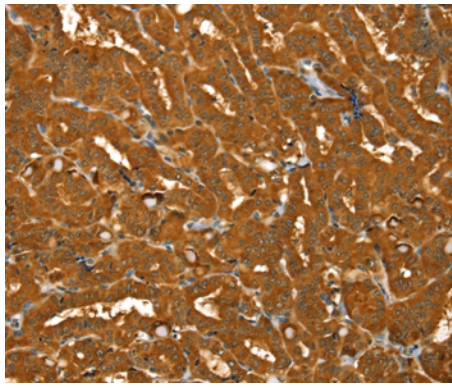
Western blotting: 1:500-1:2000

Immunohistochemistry: 1:30-1:150

## Images



Gel: 8%SDS-PAGE  
Lysates (from left to right): Mouse heart tissue  
Amount of lysate: 40ug per lane  
Primary antibody: 1/400 dilution  
Secondary antibody dilution: 1/8000  
Exposure time: 40 seconds



Immunohistochemical analysis of paraffin-embedded Human thyroid cancer tissue using #36710 at dilution 1/30.

## Background

This gene encodes a muscle enzyme involved in glycogenolysis. Highly similar enzymes encoded by different genes are found in liver and brain. Mutations in this gene are associated with McArdle disease (myophosphorylase deficiency), a glycogen storage disease of muscle. Alternative splicing results in multiple transcript variants.

Note: This product is for in vitro research use only