

## RAB25 Antibody

Catalog No: #36711

Orders: [order@signalwayantibody.com](mailto:order@signalwayantibody.com)Support: [tech@signalwayantibody.com](mailto:tech@signalwayantibody.com)

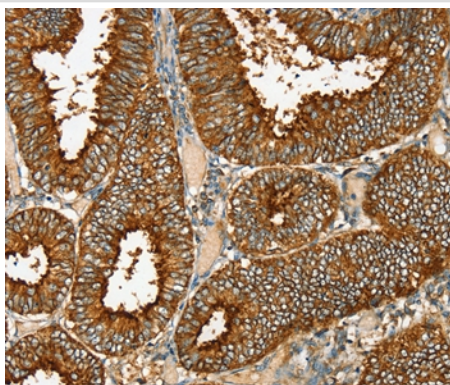
## Description

Product Name	RAB25 Antibody
Host Species	Rabbit
Clonality	Polyclonal
Purification	Antigen affinity purification.
Applications	IHC
Species Reactivity	Hu
Specificity	The antibody detects endogenous levels of total RAB25 protein.
Immunogen Type	Recombinant Protein
Immunogen Description	Fusion protein corresponding to residues near the N terminal of human RAB25, member RAS oncogene family
Target Name	RAB25
Other Names	CATX-8; RAB11C
Accession No.	Swiss-Prot#: P57735NCBI Gene ID: 57111Gene Accssion: BC009831/P57735
Uniprot	P57735
GeneID	57111;
Concentration	2mg/ml
Formulation	Rabbit IgG in pH7.4 PBS, 0.05% NaN <sub>3</sub> , 40% Glycerol.
Storage	Store at -20°C

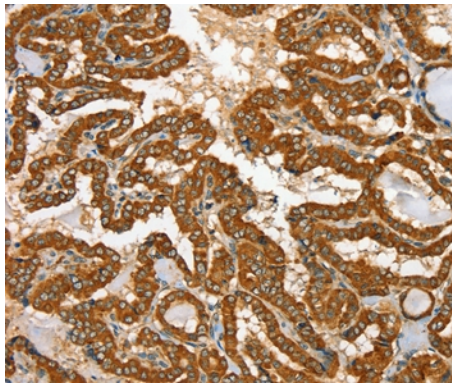
## Application Details

Immunohistochemistry: 1:40-1:150

## Images



Immunohistochemical analysis of paraffin-embedded Human cervical cancer tissue using #36711 at dilution 1/35.



Immunohistochemical analysis of paraffin-embedded Human thyroid cancer tissue using #36711 at dilution 1/35.

## Background

RAB proteins, such as RAB25, are members of the RAS superfamily of small GTPases that are involved in membrane trafficking. Members of the RAB11 subfamily, including RAB25, control the return of internalized membrane-associated moieties to the cell surface.

Note: This product is for in vitro research use only