

## RAB2A Antibody

Catalog No: #36712

Orders: [order@signalwayantibody.com](mailto:order@signalwayantibody.com)Support: [tech@signalwayantibody.com](mailto:tech@signalwayantibody.com)

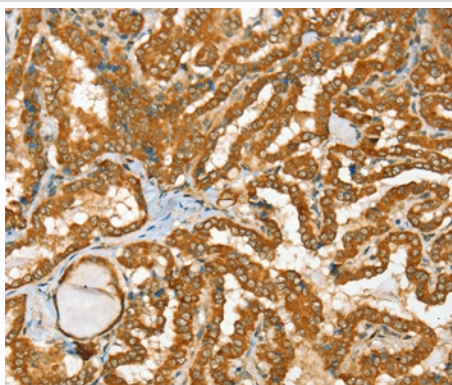
## Description

Product Name	RAB2A Antibody
Host Species	Rabbit
Clonality	Polyclonal
Purification	Antigen affinity purification.
Applications	IHC
Species Reactivity	Hu Ms
Specificity	The antibody detects endogenous levels of total RAB2A protein.
Immunogen Type	Recombinant Protein
Immunogen Description	Full length fusion protein
Target Name	RAB2A
Other Names	LHX; RAB2
Accession No.	Swiss-Prot#: P61019NCBI Gene ID: 5862Gene Accssion: BC008929/P61019
Uniprot	P61019
GeneID	5862;
Concentration	1.4mg/ml
Formulation	Rabbit IgG in pH7.4 PBS, 0.05% NaN <sub>3</sub> , 40% Glycerol.
Storage	Store at -20°C

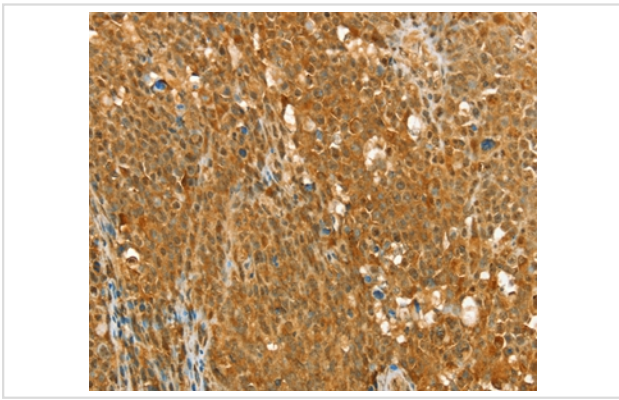
## Application Details

Immunohistochemistry: 1:25-1:100

## Images



Immunohistochemical analysis of paraffin-embedded Human thyroid cancer tissue using #36712 at dilution 1/25.



Immunohistochemical analysis of paraffin-embedded Human ovarian cancer tissue using #36712 at dilution 1/25.

## Background

The protein encoded by this gene belongs to the Rab family, members of which are small molecular weight guanosine triphosphatases (GTPases) that contain highly conserved domains involved in GTP binding and hydrolysis. The Rabs are membrane-bound proteins, involved in vesicular fusion and trafficking. This protein is a resident of pre-Golgi intermediates, and is required for protein transport from the endoplasmic reticulum (ER) to the Golgi complex.?

Note: This product is for in vitro research use only