

## RASSF9 Antibody

Catalog No: #36714

Orders: [order@signalwayantibody.com](mailto:order@signalwayantibody.com)Support: [tech@signalwayantibody.com](mailto:tech@signalwayantibody.com)

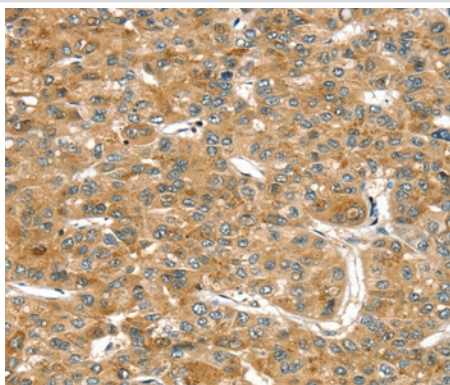
## Description

Product Name	RASSF9 Antibody
Host Species	Rabbit
Clonality	Polyclonal
Purification	Antigen affinity purification.
Applications	IHC
Species Reactivity	Hu
Specificity	The antibody detects endogenous levels of total RASSF9 protein.
Immunogen Type	Recombinant Protein
Immunogen Description	Fusion protein corresponding to residues near the C terminal of human Ras association (RaIGDS/AF-6) domain family (N-terminal) member 9
Target Name	RASSF9
Other Names	PAMCI; PCIP1; P-CIP1
Accession No.	Swiss-Prot#: O75901NCBI Gene ID: 9182Gene Accssion: BC031589/O75901
Uniprot	O75901
GeneID	9182;
Concentration	2.5mg/ml
Formulation	Rabbit IgG in pH7.4 PBS, 0.05% NaN <sub>3</sub> , 40% Glycerol.
Storage	Store at -20°C

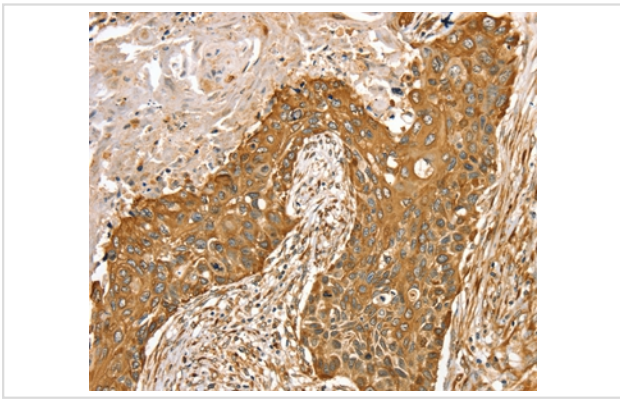
## Application Details

Immunohistochemistry: 1:50-1:200

## Images



Immunohistochemical analysis of paraffin-embedded Human liver cancer tissue using #36714 at dilution 1/45.



Immunohistochemical analysis of paraffin-embedded Human esophagus cancer tissue using #36714 at dilution 1/45.

## Background

The protein encoded by this gene localizes to perinuclear endosomes. This protein associates with peptidylglycine alpha-amidating monooxygenase, and may be involved with the trafficking of this enzyme through secretory or endosomal pathways.?

Note: This product is for in vitro research use only