

RBBP5 Antibody

Catalog No: #36715

Orders: order@signalwayantibody.com

Support: tech@signalwayantibody.com

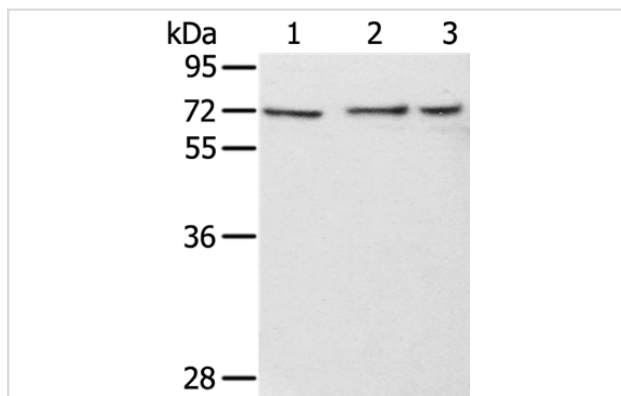
Description

Product Name	RBBP5 Antibody
Host Species	Rabbit
Clonality	Polyclonal
Purification	Antigen affinity purification.
Applications	WB
Species Reactivity	Hu
Specificity	The antibody detects endogenous levels of total RBBP5 protein.
Immunogen Type	Recombinant Protein
Immunogen Description	Fusion protein corresponding to a region derived from internal residues of human retinoblastoma binding protein 5
Target Name	RBBP5
Other Names	RBQ3; SWD1
Accession No.	Swiss-Prot#: Q15291NCBI Gene ID: 5929Gene Accssion: BC053856/Q15291
Uniprot	Q15291
GeneID	5929;
SDS-PAGE MW	59kd
Concentration	1.3mg/ml
Formulation	Rabbit IgG in pH7.4 PBS, 0.05% NaN ₃ , 40% Glycerol.
Storage	Store at -20°C

Application Details

Western blotting: 1:200-1:1000

Images



Gel: 8%SDS-PAGE
 Lysates (from left to right): HeLa, hepg2 and HT-29 cell
 Amount of lysate: 40ug per lane
 Primary antibody: 1/350 dilution
 Secondary antibody dilution: 1/8000
 Exposure time: 10 seconds

Background

This gene encodes a ubiquitously expressed nuclear protein which belongs to a highly conserved subfamily of WD-repeat proteins. The encoded

protein binds directly to retinoblastoma protein, which regulates cell proliferation. It interacts preferentially with the underphosphorylated retinoblastoma protein via the E1A-binding pocket B. Three alternatively spliced transcript variants that encode different protein isoforms have been described for this gene.?

Note: This product is for in vitro research use only