

ACIN1 Antibody

Catalog No: #36725

Orders: order@signalwayantibody.comSupport: tech@signalwayantibody.com

Description

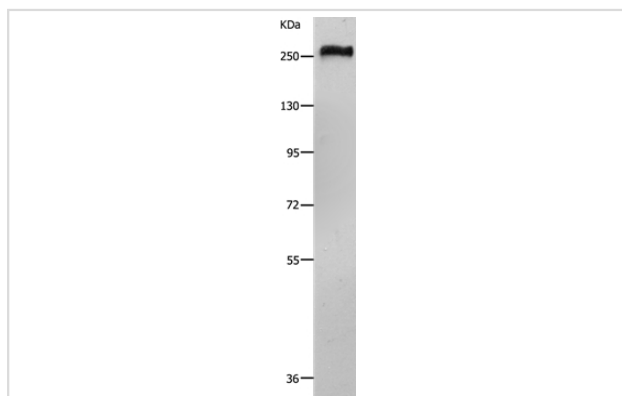
Product Name	ACIN1 Antibody
Host Species	Rabbit
Clonality	Polyclonal
Purification	Antigen affinity purification.
Applications	WB IHC
Species Reactivity	Hu Ms
Specificity	The antibody detects endogenous levels of total ACIN1 protein.
Immunogen Type	Peptide
Immunogen Description	Synthetic peptide corresponding to a region derived from internal residues of human apoptotic chromatin condensation inducer 1
Target Name	ACIN1
Other Names	ACN; ACINUS; fSAP152
Accession No.	Swiss-Prot#: Q9UKV3NCBI Gene ID: 22985Gene Accssion: NP_055792
Uniprot	Q9UKV3
GeneID	22985;
SDS-PAGE MW	152kd
Concentration	1.1mg/ml
Formulation	Rabbit IgG in pH7.4 PBS, 0.05% NaN ₃ , 40% Glycerol.
Storage	Store at -20°C

Application Details

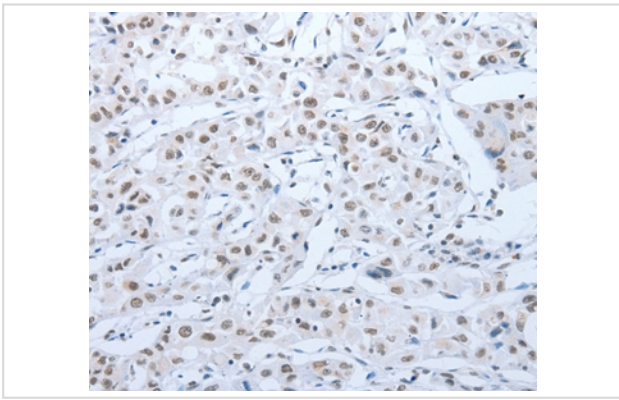
Western blotting: 1:500-1:2000

Immunohistochemistry: 1:25-1:100

Images



Gel: 8%SDS-PAGE
 Lysate: 40ug 231 cell
 Primary antibody: 1/550 dilution
 Secondary antibody dilution: 1/8000
 Exposure time: 1 minute



Immunohistochemical analysis of paraffin-embedded Human lung cancer tissue using #36725 at dilution 1/30.

Background

Apoptosis is defined by several morphologic nuclear changes, including chromatin condensation and nuclear fragmentation. This gene encodes a nuclear protein that induces apoptotic chromatin condensation after activation by caspase-3, without inducing DNA fragmentation. This protein has also been shown to be a component of a splicing-dependent multiprotein exon junction complex (EJC) that is deposited at splice junctions on mRNAs, as a consequence of pre-mRNA splicing. It may thus be involved in mRNA metabolism associated with splicing. Alternatively spliced transcript variants encoding different isoforms have been described for this gene.

Note: This product is for in vitro research use only