

ADM2 Antibody

Catalog No: #36727

Orders: order@signalwayantibody.comSupport: tech@signalwayantibody.com

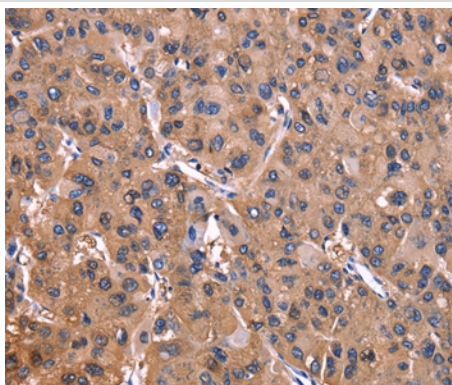
Description

Product Name	ADM2 Antibody
Host Species	Rabbit
Clonality	Polyclonal
Purification	Antigen affinity purification.
Applications	IHC
Species Reactivity	Hu
Specificity	The antibody detects endogenous levels of total ADM2 protein.
Immunogen Type	Peptide
Immunogen Description	Synthetic peptide corresponding to a region derived from internal residues of human adrenomedullin 2
Target Name	ADM2
Other Names	AM2; dJ579N16.4
Accession No.	Swiss-Prot#: Q7Z4H4NCBI Gene ID: 79924Gene Accssion: NP_079142
Uniprot	Q7Z4H4
GeneID	79924;
Concentration	2.1mg/ml
Formulation	Rabbit IgG in pH7.4 PBS, 0.05% NaN ₃ , 40% Glycerol.
Storage	Store at -20°C

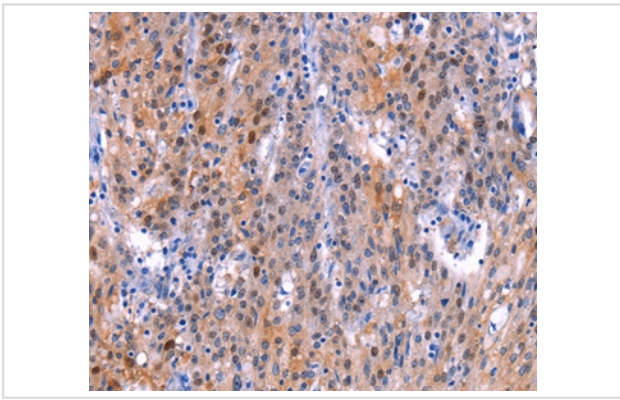
Application Details

Immunohistochemistry: 1:50-1:200

Images



Immunohistochemical analysis of paraffin-embedded Human liver cancer tissue using #36727 at dilution 1/40.



Immunohistochemical analysis of paraffin-embedded Human gastric cancer tissue using #36727 at dilution 1/40.

Background

This gene encodes a protein which is a member of the calcitonin-related hormones. The encoded protein is involved in maintaining homeostasis in many tissues, acting via CRLR/RAMP receptor (calcitonin receptor-like receptor/receptor activity-modifying protein) complexes. Multiple alternatively spliced variants, encoding the same protein, have been identified.

Note: This product is for in vitro research use only