

Description

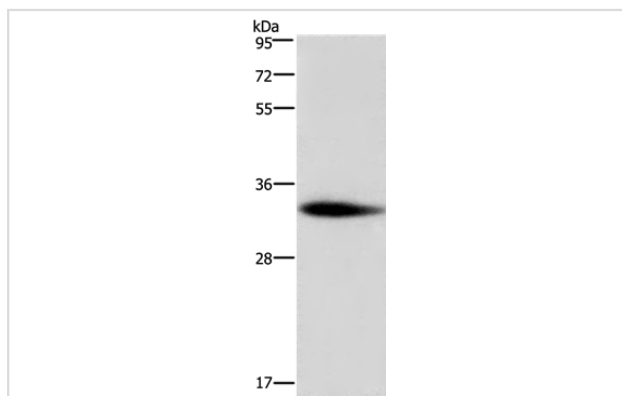
Product Name	ADO Antibody
Host Species	Rabbit
Clonality	Polyclonal
Purification	Antigen affinity purification.
Applications	WB IHC
Species Reactivity	Hu Ms
Specificity	The antibody detects endogenous levels of total ADO protein.
Immunogen Type	Peptide
Immunogen Description	Synthetic peptide corresponding to a region derived from internal residues of human 2-aminoethanethiol dioxygenase
Target Name	ADO
Other Names	C10orf22;FLJ14547
Accession No.	Swiss-Prot#: Q96SZ5NCBI Gene ID: 84890Gene Accssion: NP_116193
Uniprot	Q96SZ5
GeneID	84890;
SDS-PAGE MW	30kd
Concentration	0.7mg/ml
Formulation	Rabbit IgG in pH7.4 PBS, 0.05% NaN ₃ , 40% Glycerol.
Storage	Store at -20°C

Application Details

Western blotting: 1:500-1:2000

Immunohistochemistry: 1:25-1:100

Images



Gel: 12%SDS-PAGE

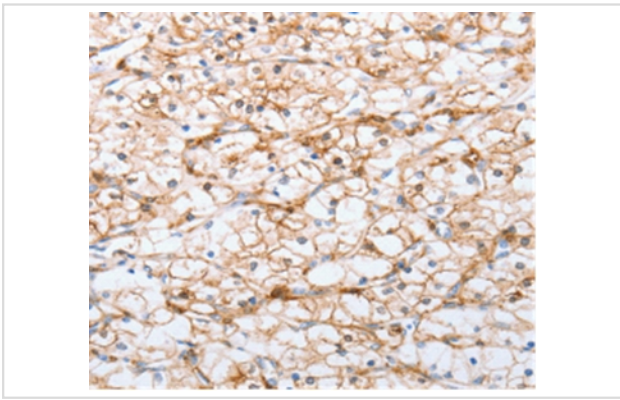
Lysates (from left to right): Mouse testis tissue

Amount of lysate: 30ug per lane

Primary antibody: 1/350 dilution

Secondary antibody dilution: 1/8000

Exposure time: 5 minutes



Immunohistochemical analysis of paraffin-embedded Human renal cancer tissue using #36728 at dilution 1/20.

Background

Human thiol dioxygenases include cysteine dioxygenase (CDO, MIM 603943) and cysteamine (2-aminoethanethiol) dioxygenase (ADO, EC 1.13.11.19). CDO adds 2 oxygen atoms to free cysteine, whereas ADO adds 2 oxygen atoms to free cysteamine to form hypotaurine.

Note: This product is for in vitro research use only