

ADRB1 Antibody

Catalog No: #36730

Orders: order@signalwayantibody.comSupport: tech@signalwayantibody.com

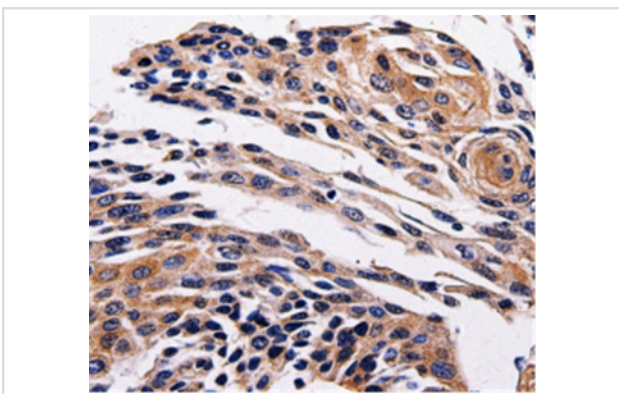
Description

Product Name	ADRB1 Antibody
Host Species	Rabbit
Clonality	Polyclonal
Purification	Antigen affinity purification.
Applications	IHC
Species Reactivity	Hu
Specificity	The antibody detects endogenous levels of total ADRB1 protein.
Immunogen Type	Peptide
Immunogen Description	Synthetic peptide corresponding to a region derived from internal residues of human Beta-1 adrenergic receptor
Target Name	ADRB1
Other Names	RHR; B1AR; ADRB1R; BETA1AR
Accession No.	Swiss-Prot#: P08588NCBI Gene ID: 153Gene Accssion:
Uniprot	P08588
GeneID	153;
Concentration	0.8mg/ml
Formulation	Rabbit IgG in pH7.4 PBS, 0.05% NaN ₃ , 40% Glycerol.
Storage	Store at -20°C

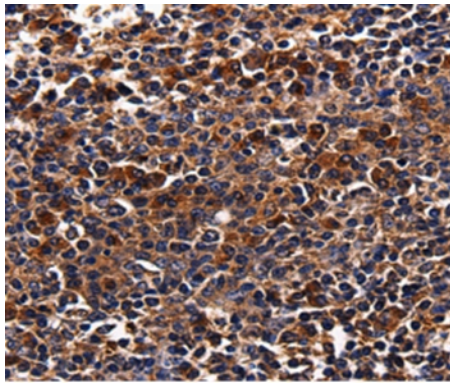
Application Details

Immunohistochemistry: 1:25-1:100

Images



Immunohistochemical analysis of paraffin-embedded Human tonsil cancer tissue using #36730 at dilution 1/25.



Immunohistochemical analysis of paraffin-embedded Human cervical cancer tissue using #36730 at dilution 1/25.

Background

The adrenergic receptors (subtypes alpha 1, alpha 2, beta 1, and beta 2) are a prototypic family of guanine nucleotide binding regulatory protein-coupled receptors that mediate the physiological effects of the hormone epinephrine and the neurotransmitter norepinephrine. Specific polymorphisms in this gene have been shown to affect the resting heart rate and can be involved in heart failure.

Note: This product is for in vitro research use only