

RAB22A Antibody

Catalog No: #36733

Orders: order@signalwayantibody.comSupport: tech@signalwayantibody.com

Description

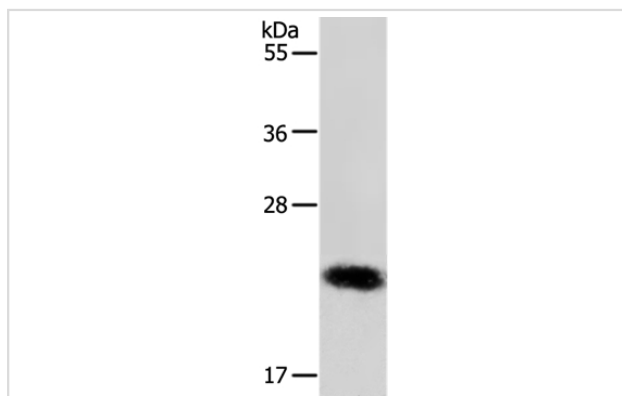
Product Name	RAB22A Antibody
Host Species	Rabbit
Clonality	Polyclonal
Purification	Antigen affinity purification.
Applications	WB IHC
Species Reactivity	Hu Ms
Specificity	The antibody detects endogenous levels of total RAB22A protein.
Immunogen Type	Peptide
Immunogen Description	Synthetic peptide corresponding to a region derived from internal residues of human Ras-related protein Rab-22A
Target Name	RAB22A
Other Names	RB22A; GTP-binding protein RAB22A;RAB22
Accession No.	Swiss-Prot#: Q9UL26NCBI Gene ID: 57403Gene Accssion: NP_065724
Uniprot	Q9UL26
GeneID	57403;
SDS-PAGE MW	22kd
Concentration	1.3mg/ml
Formulation	Rabbit IgG in pH7.4 PBS, 0.05% NaN ₃ , 40% Glycerol.
Storage	Store at -20°C

Application Details

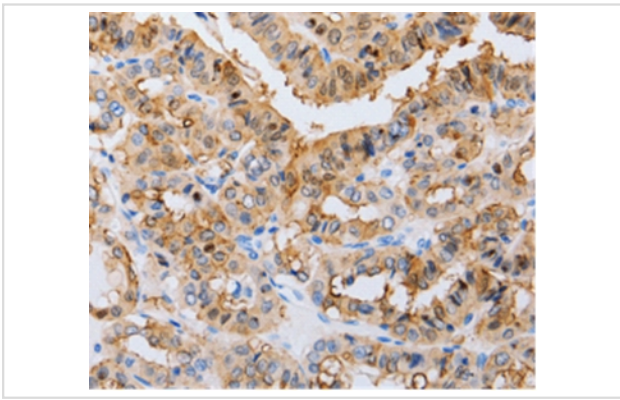
Western blotting: 1:500-1:2000

Immunohistochemistry: 1:25-1:100

Images



Gel: 12%SDS-PAGE
Lysate: 40ug MCF-7 cell
Primary antibody: 1/650 dilution
Secondary antibody dilution: 1/8000
Exposure time: 30 seconds



Immunohistochemical analysis of paraffin-embedded Human liver cancer tissue using #36733 at dilution 1/20.

Background

The protein encoded by this gene is a member of the RAB family of small GTPases. The GTP-bound form of the encoded protein has been shown to interact with early-endosomal antigen 1, and may be involved in the trafficking of and interaction between endosomal compartments.

Note: This product is for in vitro research use only