

RAB35 Antibody

Catalog No: #36735

Orders: order@signalwayantibody.comSupport: tech@signalwayantibody.com

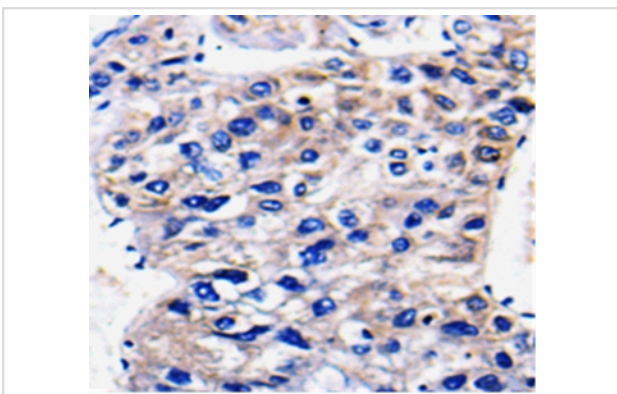
Description

Product Name	RAB35 Antibody
Host Species	Rabbit
Clonality	Polyclonal
Purification	Antigen affinity purification.
Applications	IHC
Species Reactivity	Hu Ms Rt
Specificity	The antibody detects endogenous levels of total RAB35 protein.
Immunogen Type	Peptide
Immunogen Description	Synthetic peptide corresponding to a region derived from internal residues of human Ras-related protein Rab-35
Target Name	RAB35
Other Names	RAY; H-ray; RAB1C
Accession No.	Swiss-Prot#: Q15286NCBI Gene ID: 11021Gene Accssion: NP_006852
Uniprot	Q15286
GeneID	11021;
Concentration	1mg/ml
Formulation	Rabbit IgG in pH7.4 PBS, 0.05% NaN ₃ , 40% Glycerol.
Storage	Store at -20°C

Application Details

Immunohistochemistry: 1:50-1:150

Images



Immunohistochemical analysis of paraffin-embedded Human liver cancer tissue using #36735 at dilution 1/100.

Background

This gene encodes a small GTP-binding protein that belongs to the largest family within the Ras superfamily. Rab35 plays an important role in insulin-stimulated GLUT4 translocation in adipocytes. It is the target of TBC1D10A^{BCC} and that the intracellular accumulation of endosomal vesicles

and impairs exosome secretion were occurred when inhibition of Rab35 function. The surface of oligodendroglia in a GTP-dependent manner was localized Rab35, it increases the density of vesicles, and may have a function in docking or tethering.

Note: This product is for in vitro research use only